



MS45 Aluminium Limit Switch Box NEMA 4/4x



FEATURES AND BENEFITS

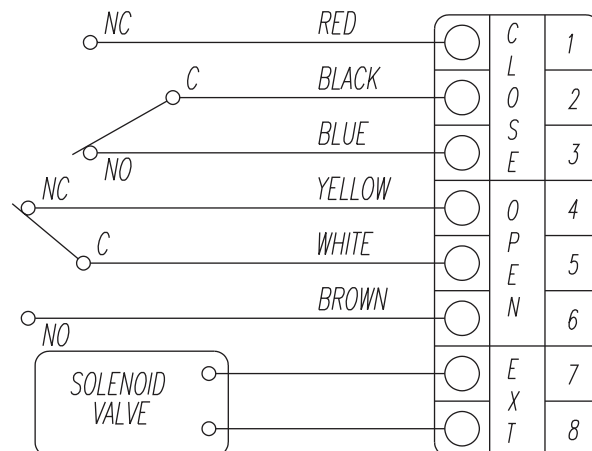
- **“Quick Set” Cams**—The operating position of the switches can be easily changed by adjusting the high resolution spline cams manually and independently without the need for additional tools (cam closed - up, cam open - down)
- **Compact Design**—The Max-Air Technology MS45 is a very compact limit switch box, minimizing valve package envelope size
- **Easy Wiring**—MS45 is equipped as standard with 2 conduit entries 1/2” NPT and 1 terminal strip with 8 points
- **High Visibility Indicator**—Our indicator offers clear location of the current valve position
- **Captive Cover Bolts**—Designed to be capped into the cover
- **Mounting Bracket**—Adjusting NAMUR steel bracket supplied as standard with the necessary hardware for ease in mounting onto the actuator

MATERIALS

Item	Material
Visual Indicator	Polycarbonate
Housing	Die Cast Aluminum
	Epoxy Powder Coated
Shaft	AISI 304 Stainless Steel
Fasteners	AISI 304 Stainless Steel
Seals	Nitrilic Rubber NBR
Cams	Polycarbonate
Spring	AISI 304 Stainless Steel



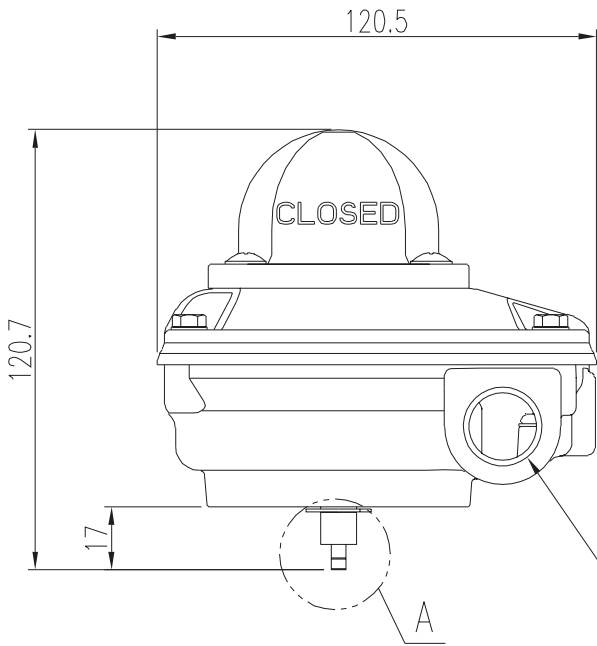
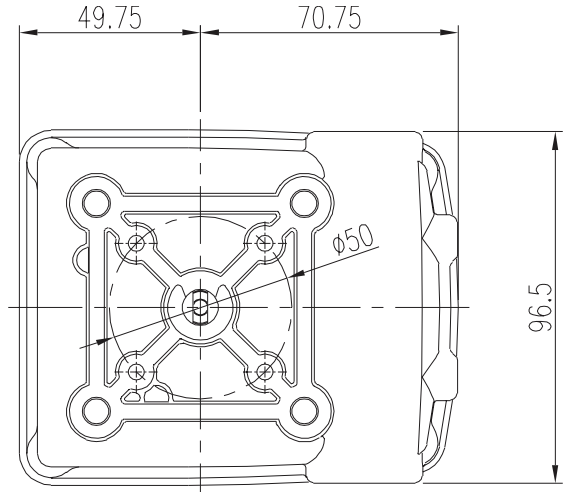
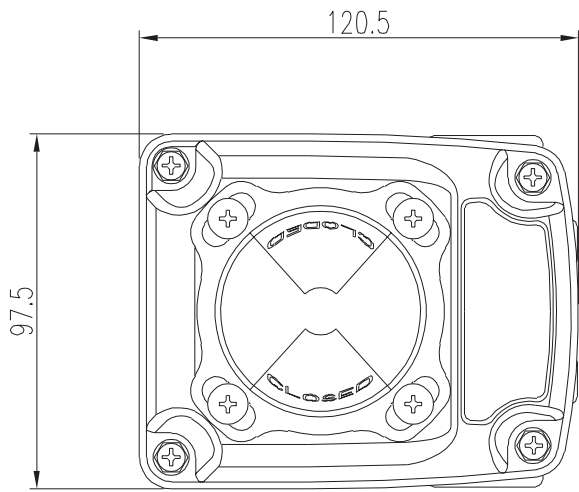
WIRING DIAGRAM Mechanical Switches (2 SPDT)



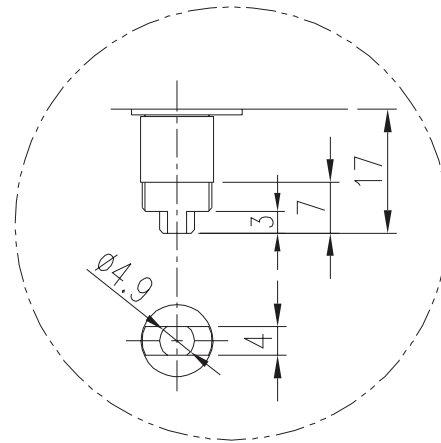
Max-Air Technology Inc.

751 Hoff Road - O'Fallon, Missouri 63366 U.S.A.
www.max-airtechnology.com info@max-airtechnology.com

MS45 DIMENSIONS



M20x1.5
NPT1/2"



DETAIL A