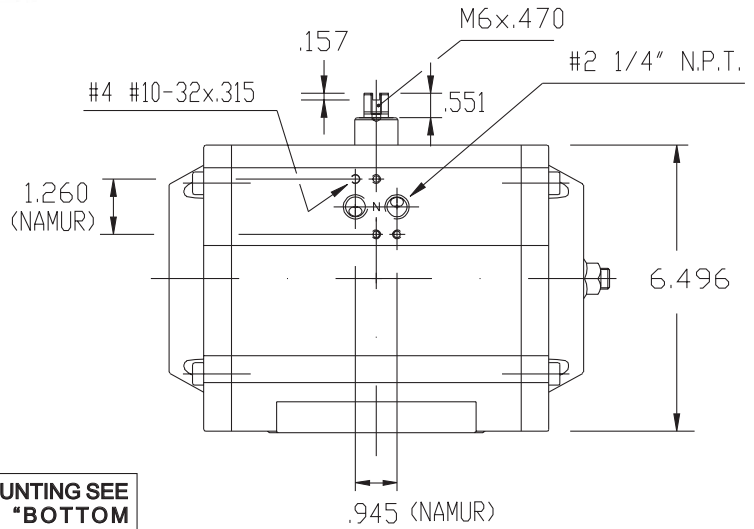
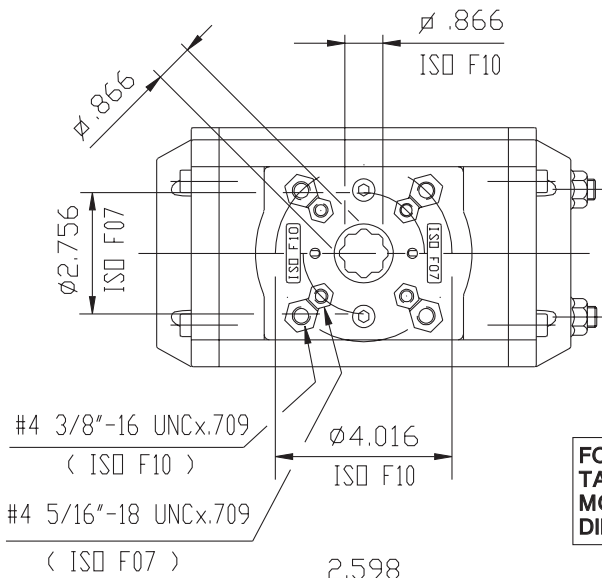


**UT-41**  
**TECHNICAL DATA**

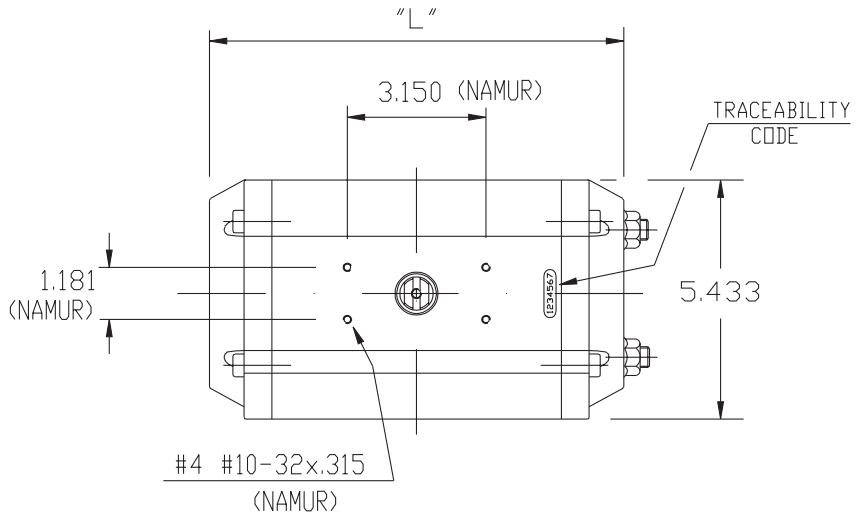
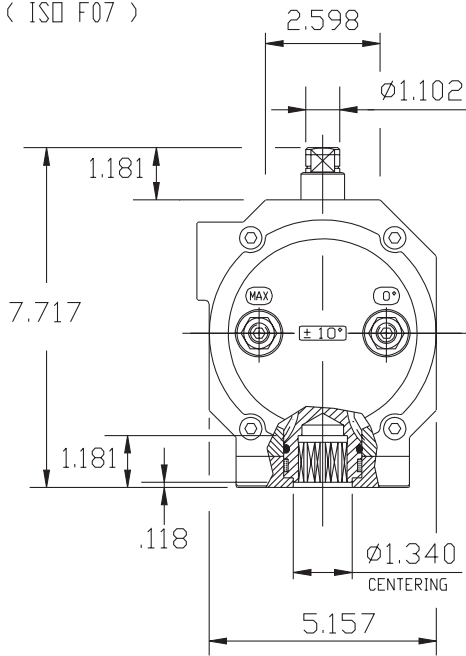


DIMENSIONS TO  
ISO 5211 - DIN 3337  
AND NAMUR VDI/VDE 3845

DIMENSIONS IN INCHES



FOR MOUNTING SEE  
TABLE "BOTTOM  
MOUNTING PLATE  
DIMENSIONS"



	90°	120°	135°	150°	180°
"L"	11.417	13.228	13.583	14.488	15.787

**WEIGHT**

STROKE	DOUBLE ACTING					SPRING RETURN 7+5 SPRING
	90°	120°	135°	150°	180°	90°
LB.	19.91	23.10	23.72	25.33	27.67	23.61

**AIR CONSUMPTION (FULL CYCLE)**

STROKE	DOUBLE ACTING					SPRING RETURN 7+5 SPRING
	90°	120°	135°	150°	180°	90°
CU.-IN.	190.6	234.4	243.7	262.5	293.7	100.0

**Max-Air** TECHNOLOGY INC.

751 Hoff Road - O'Fallon, Missouri 63366 U.S.A.  
www.max-airtechnology.com sales@max-airtechnology.com