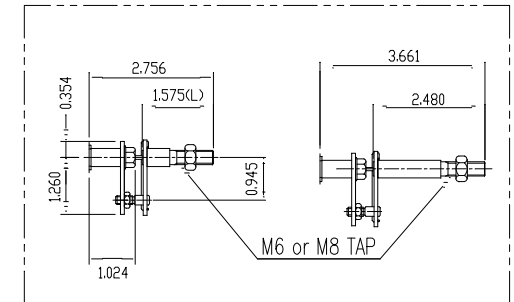


SPECIFICATIONS

Applicable Fluid	Air		
Acting Type	<input type="checkbox"/> Single	<input type="checkbox"/> Double	
Input Signal	4~20 mA DC		
Impedance	250 ±15 Ω		
Supply Pressure	1.4 ~ 7 Kg/cm ² (20 ~ 100 psi)		
Stroke	0° ~ 60°, 0° ~ 90°		
Connection	(N)PT 1/4		
Conduit	PF 1/2 (G 1/2), (N)PT 1/2		
Gauge Port	(N)PT 1/8		
Explosion Proof	<input type="checkbox"/> ExdmIBT5	<input type="checkbox"/> ExdmICT5	<input type="checkbox"/> ExaillBT5
pressure Gauge	<input type="checkbox"/> 0-28 psi	<input type="checkbox"/> 0-57 psi	<input type="checkbox"/> 0-142 psi
Ambient Temp	-4° F~158° F		
Linearity	±1.0% F.S.	±2.0% F.S.	
Hysteresis	±1.0% F.S.		
Sensitivity	±0.2% F.S.	±0.5% F.S.	
Repeatability	±0.5% F.S.		
Air Consumption	0.11 CFM (Sup.= 20 psi)		
Flow Capacity	2.8 CFM (Sup.= 20 psi)		
Weight	2.8 kg (6.2 lb)		
Actuator Shaft	M6		M8
	<input type="checkbox"/> L=40	<input type="checkbox"/> L=63	<input type="checkbox"/> L=40 <input type="checkbox"/> L=63
Material	ALUMINUM DIECASTING		



Item No.	DESCRIPTION	Material
1	BASE BODY	ALDC12
2	BASE COVER	ALDC12
3	JUNCTION BOX	ALDC12
4	CONNECT LEVER ASSEMBLY	STS 303, 304P
5	PRESSURE GAUGE	STS 304
6		
7		

BY: SE DATE: 7/30/08
REVISIONS: 1

ASSEMBLY DRAWING


Figure No's: PEX01 Reference No.

Description: Exp Proof Electro-Pneumatic Positioner, w/Universal Mtg, Gages

MAX-AIR TECHNOLOGY, INC.

PEX01

Explosion Proof Electro-Pneumatic Positioner



DATE: 7/30/2008