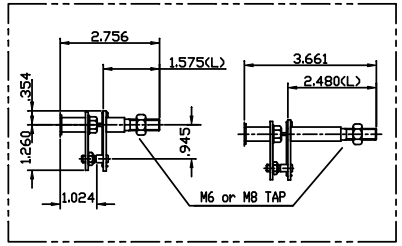


SPECIFICATIONS

Applicable Fluid	Air	
Acting Type	<input type="checkbox"/> Single	<input type="checkbox"/> Double
Input Signal	4~20 mA DC	
Impedance	250 ±15 Ω	
Supply Pressure	1.4 ~ 7 Kg/cm ² (20 ~ 100 psi)	
Stroke	0° ~ 60°, 0° ~ 90°	
Connection	(N)PT 1/4	
Conduit	PF 1/2 (G 1/2), (N)PT1/2	
Gauge Port	(N)PT 1/8	
Explosion Proof	<input type="checkbox"/> ExdmlIBT6	<input type="checkbox"/> ExdmlICT6 <input type="checkbox"/> ExialIBT6
pressure Gauge	<input type="checkbox"/> 0~28 psi	<input type="checkbox"/> 0~57 psi <input type="checkbox"/> 0~140 psi
Ambient Temp	-4° ~ 158° F	
Linearity	±1.0% F.S.	±2.0% F.S.
Hysteresis	±1.0% F.S.	
Sensitivity	±0.2% F.S.	±0.5% F.S.
Repeatability	±0.5% F.S.	
Air Consumption	0.11 CFM (Sup.=20 psi)	
Flow Capacity	2.8 CFM (Sup.=20 psi)	
Weight	3.1 kg (6.8 lb)	
Actuator Shaft	M6	M8
	<input type="checkbox"/> L=40 <input type="checkbox"/> L=63	<input type="checkbox"/> L=40 <input type="checkbox"/> L=63
Material	ALUMINUM DIECASTING	

SPECIFICATIONS (LIMIT SWITCH BOX)

Limit Switch	Rating	16A 1/2HP 125/250VAC 0.6A 125VDC ~ 0.3A 250VDC 5A 125VAC LT130
	Over Travel	0.8mm MAX
	Switch Type	2x SPDT
	Temperature Rating	-4° F ~ 140° F
	Differential Force	1.6mm MAX



Item No.	DESCRIPTION	Material
1	BASE BODY	ALDC12
2	BASE COVER	ALDC12
3	JUNCTION BOX	ALDC12
4	CONNECT LEVER ASS'Y	STS 303, 304P
5	PRESSURE GAUGE	STS 304
6	INDICATOR	PLASTIC
7		

ASSEMBLY DRAWING

Figure No's: PEY02 Reference No.

Description: Electro Pneumatic Positioner w/ Int LS, w/ Universal Mtg, Gages

MAX-AIR TECHNOLOGY, INC.

PEY02

Electro-Pneumatic Positioner
w/ Internal Limit Switch

BY: SE DATE: 8/13/08 DESC.
REVISIONS: 2 1 DATE: 7/14/2008

Model