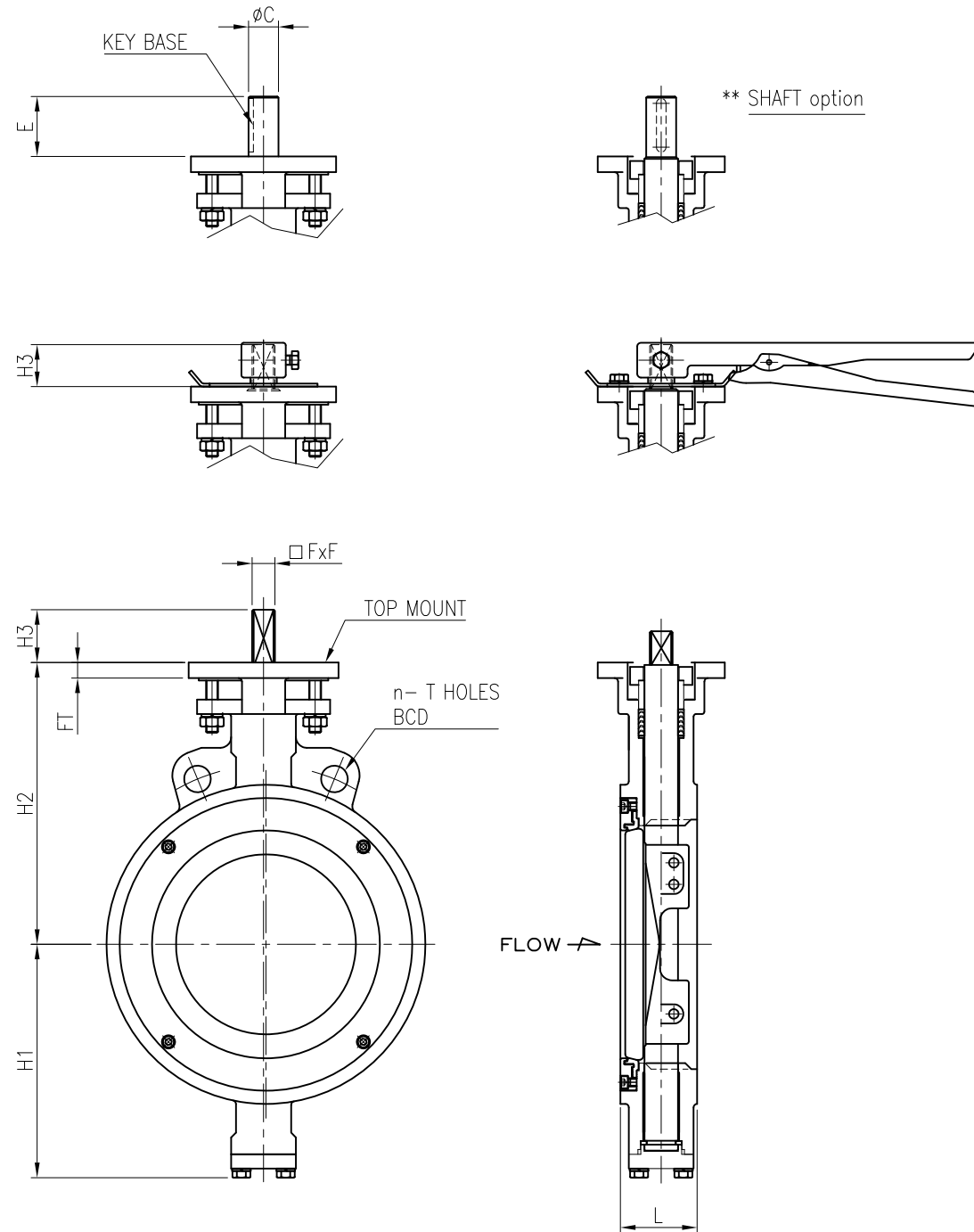




No.	Part	Soft Seated		Metal Seated		Fire Safe	
		Carbon steel	Stainless steel	Carbon steel	Stainless steel	Carbon steel	Stainless steel
01	BODY	WCB	CF8M	WCB	CF8M	WCB	CF8M
02	DISC	CF8M		CF8M+HCR		CF8M	
03	STEM	17-4PH		17-4PH		17-4PH	
04	SEAT	RTFE		SS316		RTFE+SS316	
05	SEAT RETAINER	1020	SS316	1020	SS316	1020	SS316
06	PACKING	PTFE(V-PACKING)		GRAPHITE		GRAPHITE	
07	BUSH(BEARING)	SS304+Teflon	SS316+Teflon	SS304+HCR	SS316+HCR	SS304+HCR	SS316+HCR
08	GLAND BRIDGE	SS304		SS304		SS304	
09	GLAND RING	SS304+HCR		SS304+HCR		SS304+HCR	



850 - Dimension / ASME B16.5 Class150 / Wafer type [unit : mm]

Size	L	n	BCD	T	H1	H2	H3	FxF	E	C	KEY BASE	FT	TOP MOUNT	Weight (kg)
2"	43	2	∅120.7	∅19.1	96	125	35	11x11				12	ISO 5211-F07	3.9
2.5"	46	2	∅139.7	∅19.1	102	149	35	11x11				12	ISO 5211-F07	4.9
3"	48	2	∅152.4	∅19.1	117	160	35	11x11	40	∅16	5x5	12	ISO 5211-F07	6.2
4"	54	2	∅190.5	∅19.1	128	178	35	14x14	42	∅19	6x6	12	ISO 5211-F07	8.5
5"	57	2	∅215.9	∅22.2	146	193	35	14x14	42	∅19	6x6	12	ISO 5211-F07	13.5
6"	57	2	∅241.3	∅22.2	156	205	35	14x14	42	∅19	6x6	12	ISO 5211-F10	14.7
8"	64	2	∅298.4	∅22.2	195	235	35	19x19	52	∅26	8X7	12	ISO 5211-F10	24.3
10"	71	2	∅362.0	∅25.4	220	280	35	22x22	60	∅30	10x8	15	ISO 5211-F12	36.8
12"	81	2	∅431.8	∅25.4	265	310	35	27x27	65	∅30	10x8	15	ISO 5211-F12	58.1

NOTES

- DESIGN STD. : API 609
- Mating FLANGE : ASME B16.5 CLASS150

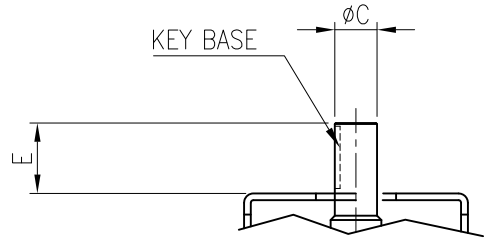
Rev. No.	DATE	DESCRIPTION	DRN.	APP.
0	23.06.15	FOR REFERENCE	DJ,LEE	JH,YU

DESCRIPTION
H/P BUTTERFLY VALVE
2" TO 12" 850 WAFER
CLASS 150 BARE STEM

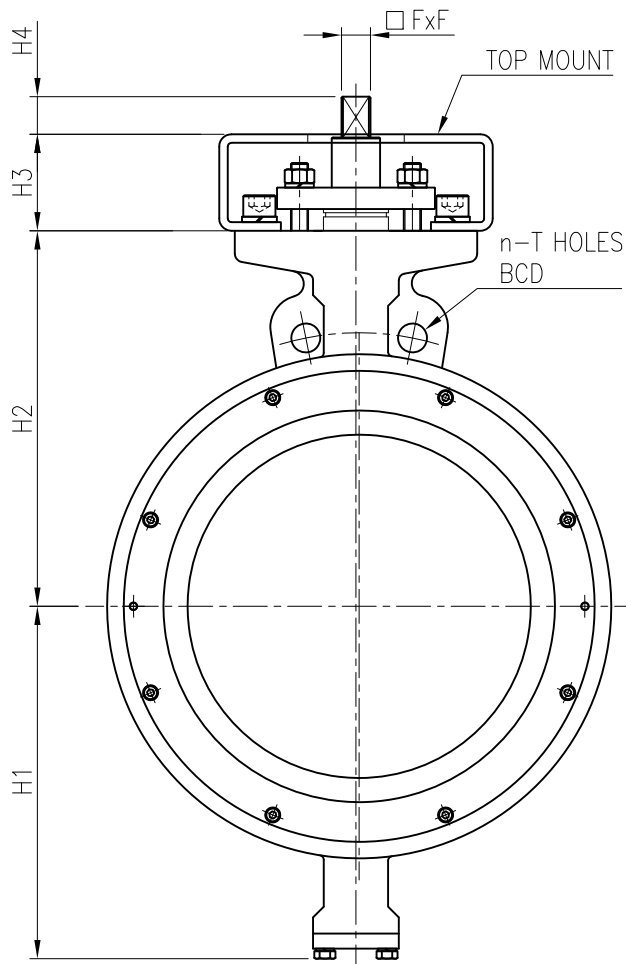
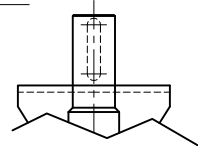
DWG. No.	850- 2- 12- 15WB- 010	SCALE	N/A
TEST PRESSURE	HYDROSTATIC	SHELL	SEAT
	AIR	kgf/cm ²	kgf/cm ²



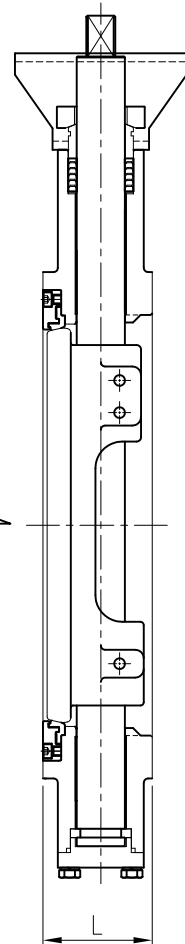
No.	Part	Soft Seated		Metal Seated		Fire Safe	
		Carbon steel	Stainless steel	Carbon steel	Stainless steel	Carbon steel	Stainless steel
01	BODY	WCB	CF8M	WCB	CF8M	WCB	CF8M
02	DISC	CF8M		CF8M+HCR		CF8M	
03	STEM	17-4PH		17-4PH		17-4PH	
04	SEAT	RTFE		SS316		RTFE+SS316	
05	SEAT RETAINER	1020	SS316	1020	SS316	1020	SS316
06	PACKING	PTFE(V-PACKING)		GRAPHITE		GRAPHITE	
07	BUSH(BEARING)	SS304+Teflon	SS316+Teflon	SS304+HCR	SS316+HCR	SS304+HCR	SS316+HCR
08	GLAND BRIDGE	SS304		SS304		SS304	
09	GLAND RING	SS304+HCR		SS304+HCR		SS304+HCR	
10	BRACKET	Carbon steel		Carbon steel		Carbon steel	



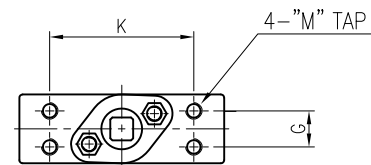
** SHAFT option



FLOW →



** BARE MOUNT DIMENSION



850- Dimension / ASME B16.5 Class150 / Wafer type [unit : mm]

Size	L	n	BCD	T	H1	H2	H3	H4	K	G	M	FxF	E	C	KEY BASE	TOP MOUNT	Weight (kg)
14"	92	2	φ476.3	φ28.6	290	315	100	35	151	40	16	27x27	75	φ40	12x8	ISO 5211-F12,F14	65.3
16"	102	2	φ539.8	φ28.6	329	350	110	35	180	45	20	27x27	75	φ40	12x8	ISO 5211-F14,F16	92.6

NOTES

- DESIGN STD. : API 609
- Mating FLANGE : ASME B16.5 CLASS150

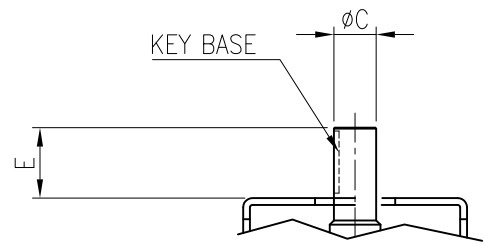
Rev. No.	DATE	DESCRIPTION	DRN.	APP.
0	23.06.15	FOR REFERENCE	DJ,LEE	JH,YU

DESCRIPTION
H/P BUTTERFLY VALVE
14" TO 16" 850 WAFER
CLASS 150 BARE STEM

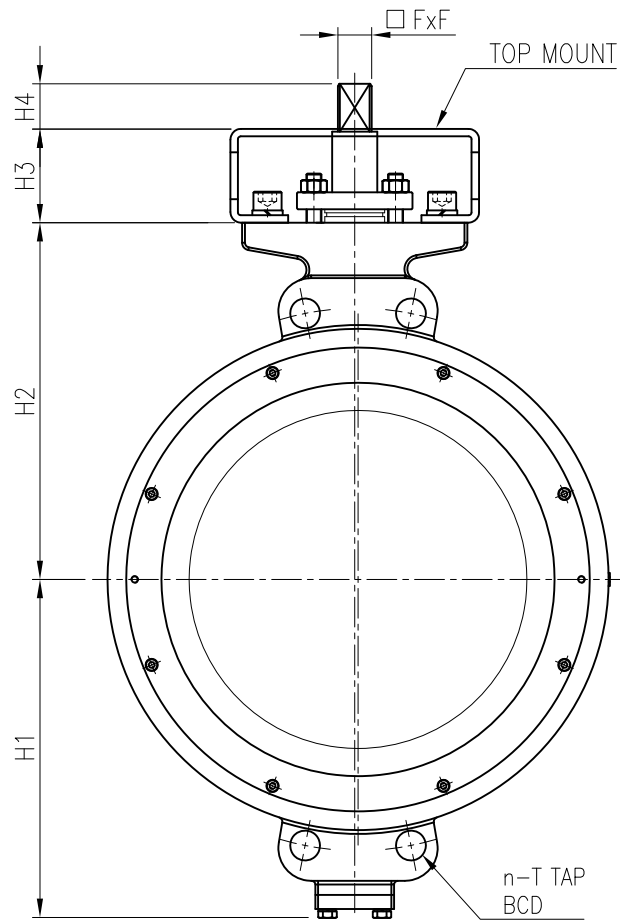
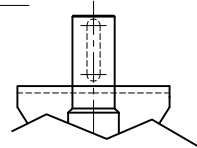
DWG. No.	850- 14- 16- 15WB- 011	SCALE	N/A
TEST PRESSURE		SHELL	SEAT
	HYDROSTATIC	kgf/cm ²	kgf/cm ²
	AIR	kgf/cm ²	kgf/cm ²



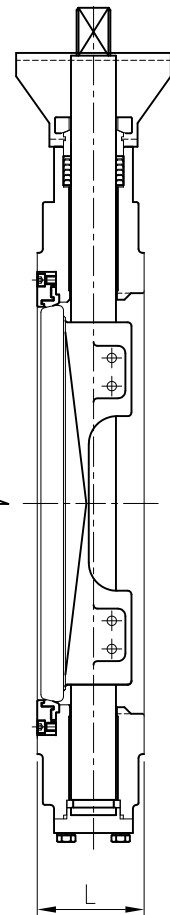
No.	Part	Soft Seated		Metal Seated		Fire Safe	
		Carbon steel	Stainless steel	Carbon steel	Stainless steel	Carbon steel	Stainless steel
01	BODY	WCB	CF8M	WCB	CF8M	WCB	CF8M
02	DISC	CF8M		CF8M+HCR		CF8M	
03	STEM	17-4PH		17-4PH		17-4PH	
04	SEAT	RTFE		SS316		RTFE+SS316	
05	SEAT RETAINER	1020	SS316	1020	SS316	1020	SS316
06	PACKING	PTFE(V-PACKING)		GRAPHITE		GRAPHITE	
07	BUSH(BEARING)	SS304+Teflon	SS316+Teflon	SS304+HCR	SS316+HCR	SS304+HCR	SS316+HCR
08	GLAND BRIDGE	SS304		SS304		SS304	
09	GLAND RING	SS304+HCR		SS304+HCR		SS304+HCR	
10	BRACKET	Carbon steel		Carbon steel		Carbon steel	



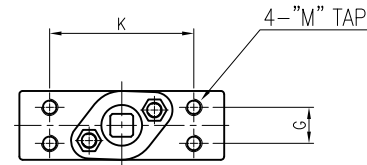
** SHAFT option



FLOW →



** BARE MOUNT DIMENSION



850 - Dimension / ASME B16.5 Class150 / Wafer type [unit : mm]

Size	L	n	BCD	T	H1	H2	H3	H4	K	G	M	FxF	E	C	KEY BASE	TOP MOUNT	Weight (kg)
18"	114	4	φ577.9	φ31.8	361	380	110	48	186	45	20	36x36	75	φ45	14x9	ISO 5211-F14,F16	138.5
20"	127	4	φ635.0	1 1/8" 8UN	400	420	120	48	186	46	20	36x36	90	φ55	16x10	ISO 5211-F14,F16	175.8
24"	154	4	φ749.3	1 1/4" 8UN	469	480	120	50	200	55	20	46x46	100	φ60	18x11	ISO 5211-F14,F16	269.4

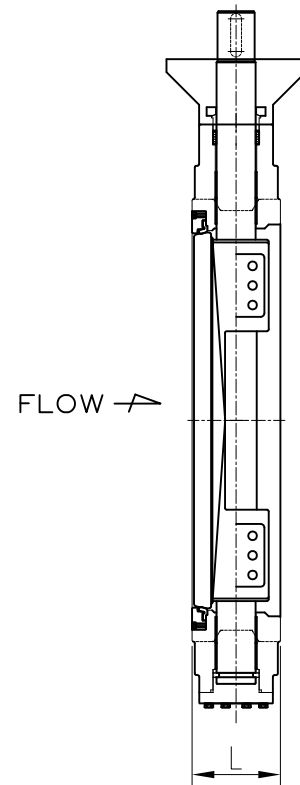
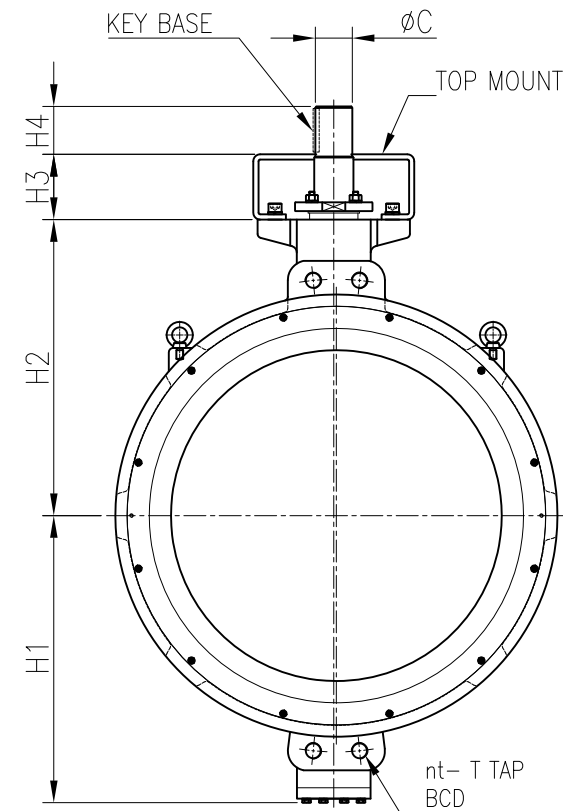
NOTES

- DESIGN STD. : API 609
- Mating FLANGE : ASME B16.5 CLASS150

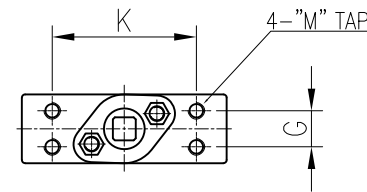
					DESCRIPTION	DWG. No.	850- 18- 24- 15WB- 011	SCALE	N/A	
					H/P BUTTERFLY VALVE	TEST PRESSURE	HYDROSTATIC	SHELL	SEAT	
					18" TO 24" 850 WAFER			AIR	kgf/cm ²	kgf/cm ²
					CLASS 150 BARE STEM				kgf/cm ²	kgf/cm ²
Rev. No.	DATE	DESCRIPTION	DRN.	APP.						
0	23.06.15	FOR REFERENCE	DJ,LEE	JH,YU						



No.	Part	Soft Seated		Metal Seated		Fire Safe	
		Carbon steel	Stainless steel	Carbon steel	Stainless steel	Carbon steel	Stainless steel
01	BODY	WCB	CF8M	WCB	CF8M	WCB	CF8M
02	DISC	CF8M		CF8M+HCR		CF8M	
03	STEM	17-4PH		17-4PH		17-4PH	
04	SEAT	RTFE		SS316		RTFE+SS316	
05	SEAT RETAINER	1020	SS316	1020	SS316	1020	SS316
06	PACKING	PTFE(V-PACKING)		GRAPHITE		GRAPHITE	
07	BUSH(BEARING)	SS304+Teflon	SS316+Teflon	SS304+HCR	SS316+HCR	SS304+HCR	SS316+HCR
08	GLAND BRIDGE	SS304		SS304		SS304	
09	GLAND RING	SS304+HCR		SS304+HCR		SS304+HCR	
10	BRACKET	Carbon steel		Carbon steel		Carbon steel	



** BARE MOUNT DIMENSION



850 - Dimension / ASME B16.47 SERIES A Class150 / Wafer type

[unit : mm]

Size	L	total (n)	nt	BCD	T	H1	H2	H3	H4	K	G	M	C	KEY BASE	TOP MOUNT (OPTION)	WEIGHT (kg)
26"	165	24	4	ø806.4	1 1/4" (8UN)	484	495	115	100	200	55	20	ø65	20x12	ISO 5211-F16,F20	307
28"	165	28	4	ø863.6	1 1/4" (8UN)	534	560	140	100	220	60	20	ø70	20x12	ISO 5211-F16,F20	346
30"	190	28	4	ø914.4	1 1/4" (8UN)	555	575	140	100	230	60	20	ø75	20x12	ISO 5211-F20,F25	436
32"	190	28	4	ø977.9	1 1/2" (8UN)	588	630	150	110	270	60	20	ø80	22x14	ISO 5211-F25,F30	492
34"	203	32	4	ø1028.7	1 1/2" (8UN)	610	650	150	110	270	60	20	ø80	22x14	ISO 5211-F25,F30	583
36"	203	32	4	ø1085.8	1 1/2" (8UN)	660	680	150	110	270	80	24	ø85	25x14	ISO 5211-F25,F30	650
40"	216	36	4	ø1200.2	1 1/2" (8UN)	730	765	160	125	280	70	24	ø90	25x14	ISO 5211-F25,F30	867
42"	251	36	4	ø1257.3	1 1/2" (8UN)	769	770	160	150	280	70	24	ø95	25x14	ISO 5211-F30,F35	1102
48"	254	44	4	ø1422.4	1 1/2" (8UN)	900	895	160	155	300	100	27	ø110	28x16	ISO 5211-F30,F35	1454

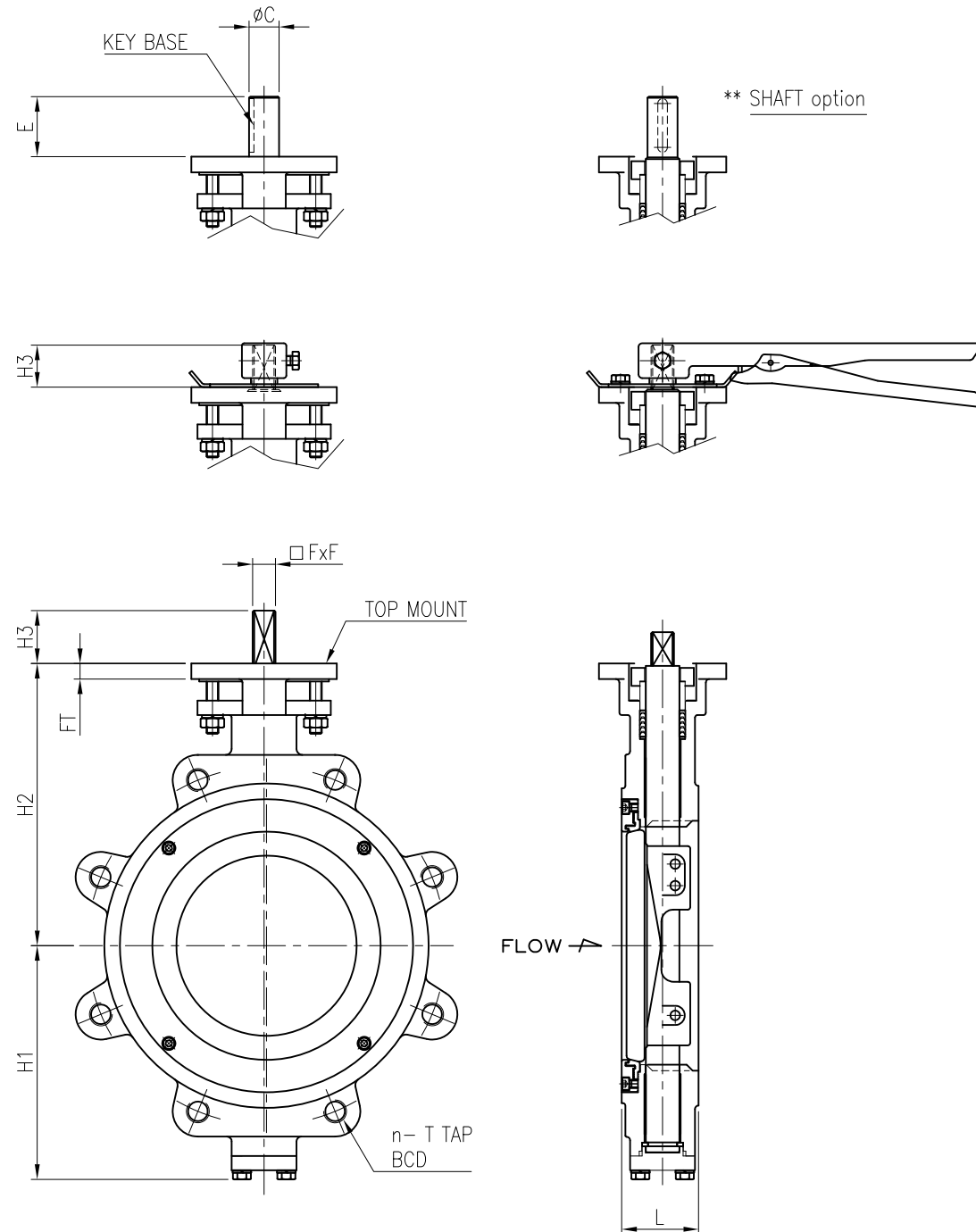
NOTES

- DESIGN STD. : API 609
- Mating FLANGE : ASME B16.34 SERIES A, CLASS150

					DESCRIPTION	DWG. No.	850- 26- 48- 15WB- 011	SCALE	N/A
					H/P BUTTERFLY VALVE	TEST PRESSURE	HYDROSTATIC	SHELL	SEAT
					26" TO 48" 850 WAFER			kgf/cm ²	kgf/cm ²
					CLASS 150 BARE STEM			AIR	kgf/cm ²
Rev. No.	DATE	DESCRIPTION	DRN.	APP.					
0	23.06.20	FOR REFERENCE	DJ,LEE	JH,YU					



No.	Part	Soft Seated		Metal Seated		Fire Safe	
		Carbon steel	Stainless steel	Carbon steel	Stainless steel	Carbon steel	Stainless steel
01	BODY	WCB	CF8M	WCB	CF8M	WCB	CF8M
02	DISC	CF8M		CF8M+HCR		CF8M	
03	STEM	17-4PH		17-4PH		17-4PH	
04	SEAT	RTFE		SS316		RTFE+SS316	
05	SEAT RETAINER	1020	SS316	1020	SS316	1020	SS316
06	PACKING	PTFE(V-PACKING)		GRAPHITE		GRAPHITE	
07	BUSH(BEARING)	SS304+Teflon	SS316+Teflon	SS304+HCR	SS316+HCR	SS304+HCR	SS316+HCR
08	GLAND BRIDGE	SS304		SS304		SS304	
09	GLAND RING	SS304+HCR		SS304+HCR		SS304+HCR	



851 - Dimension / ASME B16.5 Class150 / Lug type [unit : mm]

Size	L	n	BCD	T	H1	H2	H3	FxF	E	C	KEY BASE	FT	TOP MOUNT	Weight (kg)
2"	43	4	ø120.7	5/8" UNC	96	125	35	11x11				12	ISO 5211-F07	6.1
2.5"	46	4	ø139.7	5/8" UNC	102	149	35	11x11				12	ISO 5211-F07	7
3"	48	4	ø152.4	5/8" UNC	117	160	35	11x11	40	ø16	5x5	12	ISO 5211-F07	8.2
4"	54	8	ø190.5	5/8" UNC	128	178	35	14x14	42	ø19	6x6	12	ISO 5211-F07	13
5"	57	8	ø215.9	3/4" UNC	146	193	35	14x14	42	ø19	6x6	12	ISO 5211-F07	18.7
6"	57	8	ø241.3	3/4" UNC	156	205	35	14x14	42	ø19	6x6	12	ISO 5211-F10	23.4
8"	64	8	ø298.4	3/4" UNC	195	235	35	19x19	52	ø26	8X7	12	ISO 5211-F10	31.5
10"	71	12	ø362.0	7/8" UNC	220	280	35	22x22	60	ø30	10x8	15	ISO 5211-F12	51.9
12"	81	12	ø431.8	7/8" UNC	265	310	35	27x27	65	ø30	10x8	15	ISO 5211-F12	80.5

NOTES

- DESIGN STD. : API 609
- Mating FLANGE : ASME B16.5 CLASS150

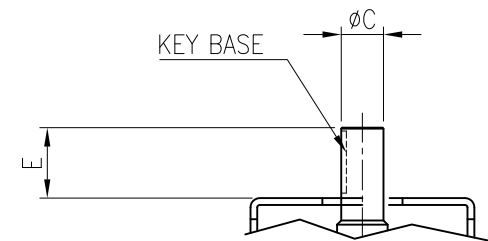
Rev. No.	DATE	DESCRIPTION	DRN.	APP.
0	23.06.15	FOR REFERENCE	DJ,LEE	JH,YU

DESCRIPTION
H/P BUTTERFLY VALVE
2" TO 12" 851 LUG
CLASS 150 BARE STEM

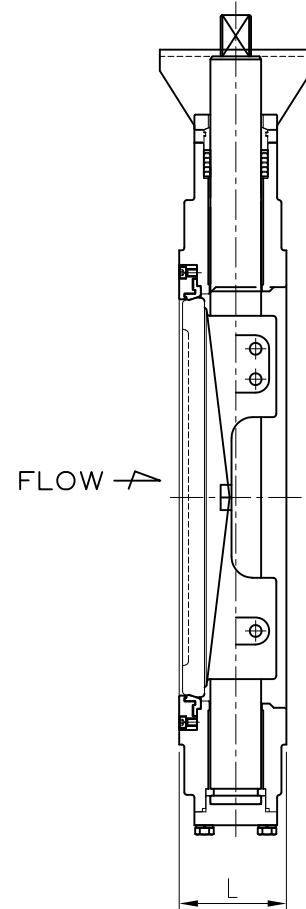
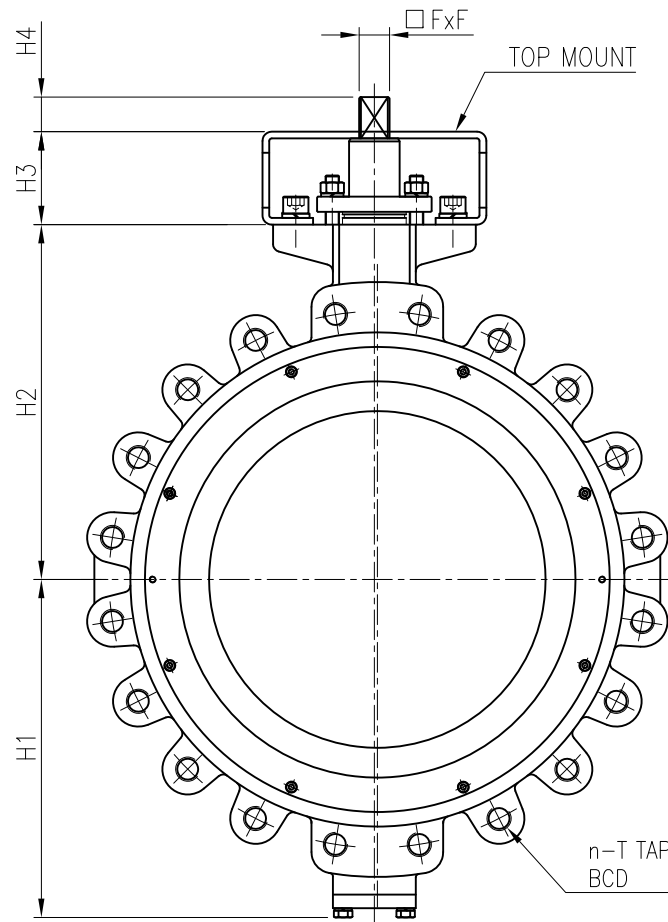
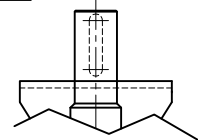
DWG. No.	851- 2- 12- 15LB- 010	SCALE	N/A
TEST PRESSURE	HYDROSTATIC	SHELL	SEAT
	AIR	kgf/cm ²	kgf/cm ²



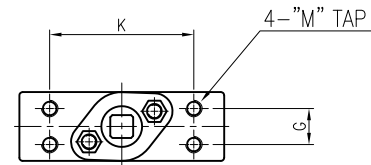
No.	Part	Soft Seated		Metal Seated		Fire Safe	
		Carbon steel	Stainless steel	Carbon steel	Stainless steel	Carbon steel	Stainless steel
01	BODY	WCB	CF8M	WCB	CF8M	WCB	CF8M
02	DISC	CF8M		CF8M+HCR		CF8M	
03	STEM	17-4PH		17-4PH		17-4PH	
04	SEAT	RTFE		SS316		RTFE+SS316	
05	SEAT RETAINER	1020	SS316	1020	SS316	1020	SS316
06	PACKING	PTFE(V-PACKING)		GRAPHITE		GRAPHITE	
07	BUSH(BEARING)	SS304+Teflon	SS316+Teflon	SS304+HCR	SS316+HCR	SS304+HCR	SS316+HCR
08	GLAND BRIDGE	SS304		SS304		SS304	
09	GLAND RING	SS304+HCR		SS304+HCR		SS304+HCR	
10	BRACKET	Carbon steel		Carbon steel		Carbon steel	



** SHAFT option



** BARE MOUNT DIMENSION



851 - Dimension / ASME B16.5 Class150 / Lug type

[unit : mm]

Size	L	n	BCD	T	H1	H2	H3	H4	K	G	M	FxF	E	C	KEY BASE	TOP MOUNT	Weight (kg)
14"	92	12	$\phi 476.3$	1" UNC	290	315	100	35	151	40	16	27x27	75	$\phi 40$	12x8	ISO 5211-F12,F14	102.3
16"	102	16	$\phi 539.8$	1" UNC	329	350	110	35	180	45	20	27x27	75	$\phi 40$	12x8	ISO 5211-F14,F16	140
18"	114	16	$\phi 577.9$	1 1/8" 8UN	361	380	110	48	186	45	20	36x36	75	$\phi 45$	14x9	ISO 5211-F14,F16	211.3
20"	127	20	$\phi 635.0$	1 1/8" 8UN	400	420	120	48	186	46	20	36x36	90	$\phi 55$	16x10	ISO 5211-F14,F16	256.4
24"	154	20	$\phi 749.3$	1 1/4" 8UN	469	480	120	50	200	55	20	46x46	100	$\phi 60$	18x11	ISO 5211-F14,F16	399.4

NOTES

- DESIGN STD. : API 609
- Mating FLANGE : ASME B16.5 CLASS150

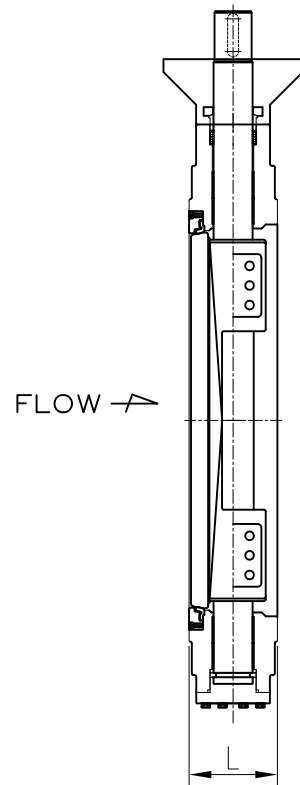
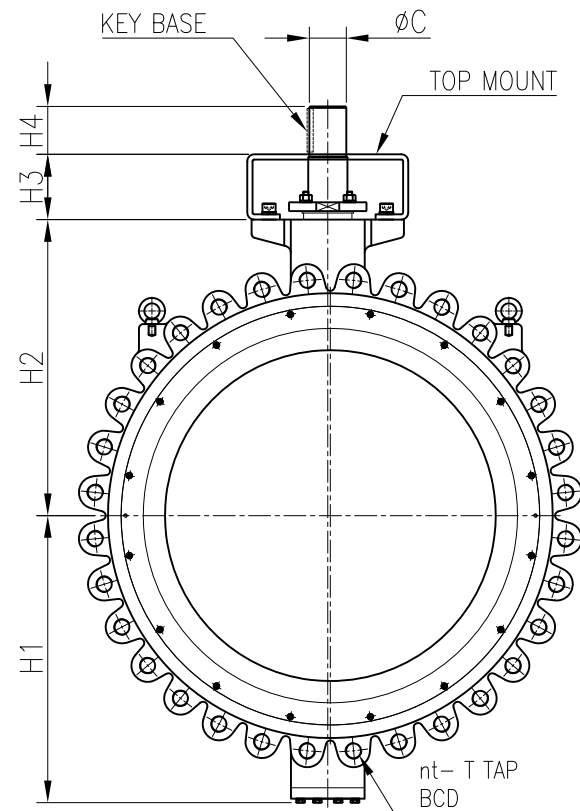
Rev. No.	DATE	DESCRIPTION	DRN.	APP.
0	23.06.15	FOR REFERENCE	DJ,LEE	JH,YU

DESCRIPTION
H/P BUTTERFLY VALVE
14" TO 24" 851 LUG
CLASS 150 BARE STEM

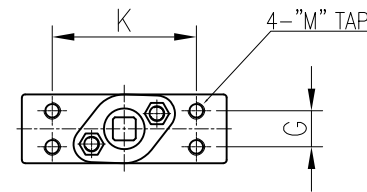
DWG. No.	851- 14- 24- 15LB- 011	SCALE	N/A
TEST PRESSURE	HYDROSTATIC	SHELL	SEAT
	AIR	kgf/cm ²	kgf/cm ²



No.	Part	Soft Seated		Metal Seated		Fire Safe	
		Carbon steel	Stainless steel	Carbon steel	Stainless steel	Carbon steel	Stainless steel
01	BODY	WCB	CF8M	WCB	CF8M	WCB	CF8M
02	DISC	CF8M		CF8M+HCR		CF8M	
03	STEM	17-4PH		17-4PH		17-4PH	
04	SEAT	RTFE		SS316		RTFE+SS316	
05	SEAT RETAINER	1020	SS316	1020	SS316	1020	SS316
06	PACKING	PTFE(V-PACKING)		GRAPHITE		GRAPHITE	
07	BUSH(BEARING)	SS304+Teflon	SS316+Teflon	SS304+HCR	SS316+HCR	SS304+HCR	SS316+HCR
08	GLAND BRIDGE	SS304		SS304		SS304	
09	GLAND RING	SS304+HCR		SS304+HCR		SS304+HCR	
10	BRACKET	Carbon steel		Carbon steel		Carbon steel	



** BARE MOUNT DIMENSION



851 - Dimension / ASME B16.47 SERIES A Class150 / Lug type [unit : mm]

Size	L	n	BCD	T	H1	H2	H3	H4	K	G	M	C	KEY BASE	TOP MOUNT (OPTION)	WEIGHT (kg)
26"	165	24	ø806.4	1 1/4" (8UN)	484	495	115	100	200	55	20	ø65	20x12	ISO 5211-F16,F20	432
28"	165	28	ø863.6	1 1/4" (8UN)	534	560	140	100	220	60	20	ø70	20x12	ISO 5211-F16,F20	476
30"	190	28	ø914.4	1 1/4" (8UN)	555	575	140	100	230	60	20	ø75	20x12	ISO 5211-F20,F25	564
32"	190	28	ø977.9	1 1/2" (8UN)	588	630	150	110	270	60	20	ø80	22x14	ISO 5211-F25,F30	605
34"	203	32	ø1028.7	1 1/2" (8UN)	610	650	150	110	270	60	20	ø80	22x14	ISO 5211-F25,F30	713
36"	203	32	ø1085.8	1 1/2" (8UN)	660	680	150	110	270	80	24	ø85	25x14	ISO 5211-F25,F30	802
40"	216	36	ø1200.2	1 1/2" (8UN)	730	765	160	125	280	70	24	ø90	25x14	ISO 5211-F25,F30	1092
42"	251	36	ø1257.3	1 1/2" (8UN)	769	770	160	150	280	70	24	ø95	25x14	ISO 5211-F30,F35	1400
48"	254	44	ø1422.4	1 1/2" (8UN)	900	895	160	155	300	100	27	ø110	28x16	ISO 5211-F30,F35	1932

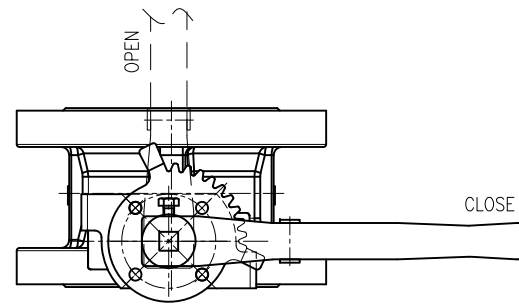
NOTES

- DESIGN STD. : API 609
- Mating FLANGE : ASME B16.34 SERIES A, CLASS150

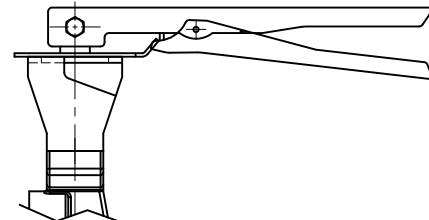
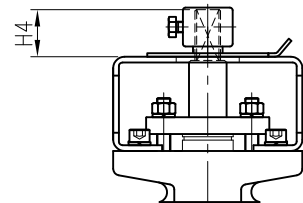
					DESCRIPTION	DWG. No.	851- 26- 48- 15LB- 011	SCALE	N/A
					H/P BUTTERFLY VALVE	TEST PRESSURE	HYDROSTATIC	SHELL	SEAT
					26" TO 48" 851 LUG			kgf/cm ²	kgf/cm ²
					CLASS 150 BARE STEM			AIR	kgf/cm ²
Rev. No.	DATE	DESCRIPTION	DRN.	APP.					
0	23.06.20	FOR REFERENCE	DJ,LEE	JH,YU					



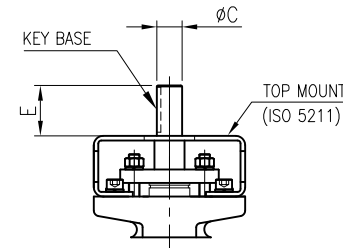
No.	Part	Soft Seated		Metal Seated		Fire Safe	
		Carbon steel	Stainless steel	Carbon steel	Stainless steel	Carbon steel	Stainless steel
01	BODY	WCB	CF8M	WCB	CF8M	WCB	CF8M
02	DISC	CF8M		CF8M+HCR		CF8M	
03	STEM	17-4PH		17-4PH		17-4PH	
04	SEAT	RTFE		SS316		RTFE+SS316	
05	SEAT RETAINER	1020	SS316	1020	SS316	1020	SS316
06	PACKING	PTFE(V-PACKING)		GRAPHITE		GRAPHITE	
07	BUSH(BEARING)	SS304+Teflon	SS316+Teflon	SS304+HCR	SS316+HCR	SS304+HCR	SS316+HCR
08	GLAND BRIDGE	SS304		SS304		SS304	
09	GLAND RING	SS304+HCR		SS304+HCR		SS304+HCR	



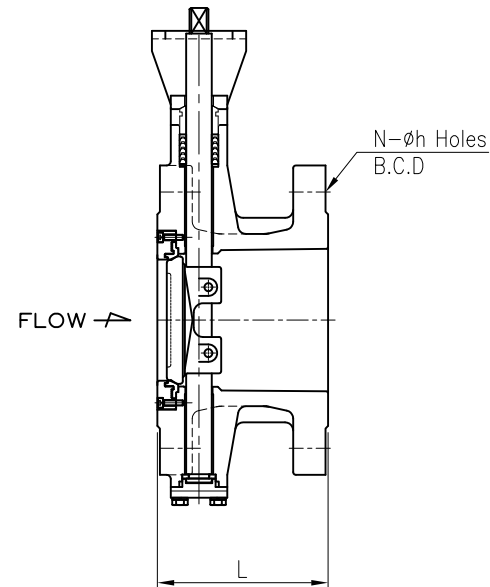
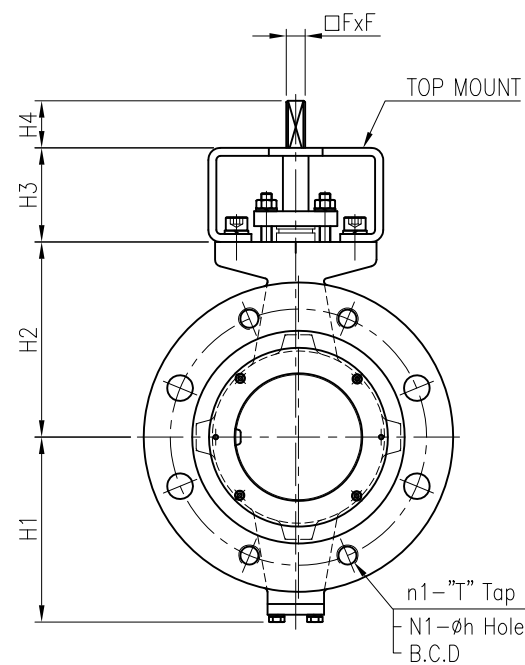
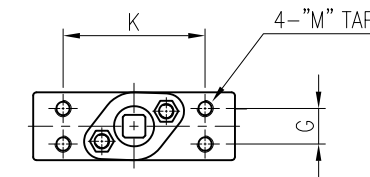
** LEVER option



** SHAFT option



** BARE MOUNT DIMENSION



853- Dimension / ASME B16.5 Class150 / Flange type

[unit : mm]

Size	L	B.C.D	n1	T(Tap)	N	N1	h	H1	H2	H3	H4	K	G	M	FxF	E	C	KEY BASE	TOP MOUNT	Weight (kg)
3"	114	ø152.4	4	5/8"UNC	4	-	ø19.1	117	130	65	35	88	22	10	11x11	40	ø16	5x5	ISO 5211-F05,F07	18.6
4"	127	ø190.5	4	5/8"UNC	8	4	ø19.1	138	145	70	35	88	22	10	14x14	42	ø19	6x6	ISO 5211-F07,F10	28.6
5"	140	ø215.9	4	3/4"UNC	8	4	ø22.2	146	165	70	35	88	22	10	14x14	42	ø19	6x6	ISO 5211-F07,F10	32.1
6"	140	ø241.3	4	3/4"UNC	8	4	ø22.2	156	175	70	35	94	24	10	14x14	42	ø19	6x6	ISO 5211-F10,F12	39.0
8"	152	ø298.4	4	3/4"UNC	8	4	ø22.2	195	210	75	35	104	32	12	19x19	52	ø26	8x7	ISO 5211-F10,F12	63.6
10"	165	ø362.0	4	7/8"UNC	12	8	ø25.4	231	250	80	35	104	32	12	22x22	60	ø30	10x8	ISO 5211-F12,F14	81.1
12"	178	ø431.8	4	7/8"UNC	12	8	ø25.4	275	295	90	35	141	40	16	27x27	65	ø30	10x8	ISO 5211-F12,F14	132.5

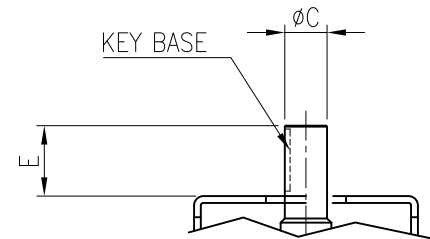
NOTES

- DESIGN STD. : API 609
- Mating FLANGE : ASME B16.5 CLASS150

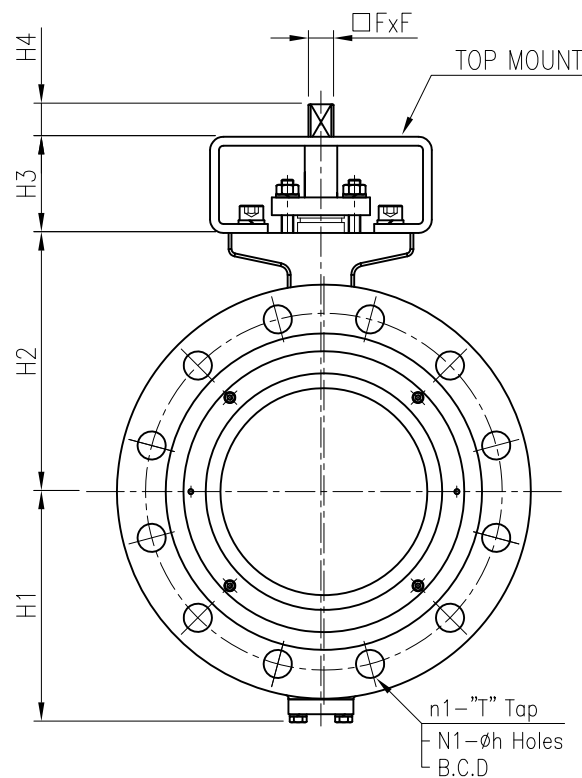
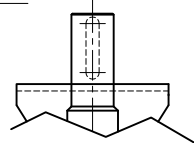
Rev. No.	DATE	DESCRIPTION	DRN.	APP.	DESCRIPTION	DWG. No.	853- 3- 12- 15LB- 010	SCALE	N/A
0	23.06.15	FOR REFERENCE	DJ,LEE	JH,YU	H/P BUTTERFLY VALVE 3" TO 12" 853 FLANGED CLASS 150 BARE STEM	TEST PRESSURE	HYDROSTATIC	SHELL	SEAT
							AIR	kgf/cm ²	kgf/cm ²



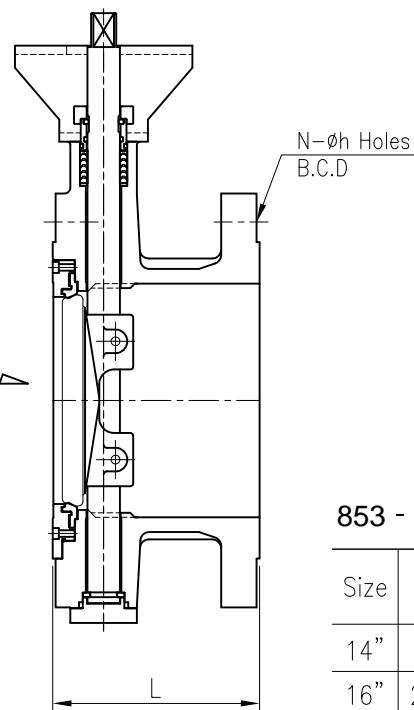
No.	Part	Soft Seated		Metal Seated		Fire Safe	
		Carbon steel	Stainless steel	Carbon steel	Stainless steel	Carbon steel	Stainless steel
01	BODY	WCB	CF8M	WCB	CF8M	WCB	CF8M
02	DISC	CF8M		CF8M+HCR		CF8M	
03	STEM	17-4PH		17-4PH		17-4PH	
04	SEAT	RTFE		SS316		RTFE+SS316	
05	SEAT RETAINER	1020	SS316	1020	SS316	1020	SS316
06	PACKING	PTFE(V-PACKING)		GRAPHITE		GRAPHITE	
07	BUSH(BEARING)	SS304+Teflon	SS316+Teflon	SS304+HCR	SS316+HCR	SS304+HCR	SS316+HCR
08	GLAND BRIDGE	SS304		SS304		SS304	
09	GLAND RING	SS304+HCR		SS304+HCR		SS304+HCR	
10	BRACKET	Carbon steel		Carbon steel		Carbon steel	



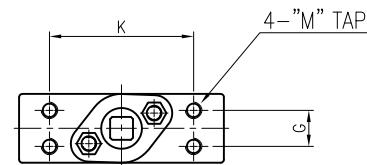
** SHAFT option



FLOW →



** BARE MOUNT DIMENSION



853 - Dimension / ASME B16.5 Class150 / Flange type

[unit : mm]

Size	L	B.C.D	n1	T(Tap)	N	N1	h	H1	H2	H3	H4	K	G	M	FxF	E	C	KEY BASE	TOP MOUNT	Weight (kg)
14"	191	ø476.3	4	1"UNC	12	8	ø28.4	290	315	90	35	151	40	16	27x27	75	ø40	12x8	ISO 5211-F12,F14	179
16"	216	ø539.8	4	1"UNC	16	12	ø28.4	329	350	110	35	180	45	20	27x27	75	ø40	12x8	ISO 5211-F14,F16	196
18"	222	ø577.9	4	1 1/8" 8UN	16	12	ø31.8	361	380	110	48	186	45	20	36x36	75	ø45	14x9	ISO 5211-F14,F16	271
20"	229	ø635.0	4	1 1/8" 8UN	20	16	ø31.8	400	420	120	48	186	46	20	36x36	90	ø55	16x10	ISO 5211-F14,F16	338
24"	267	ø749.3	4	1 1/4" 8UN	20	16	ø35.1	469	480	120	50	200	55	20	46x46	100	ø60	18x11	ISO 5211-F14,F16	558

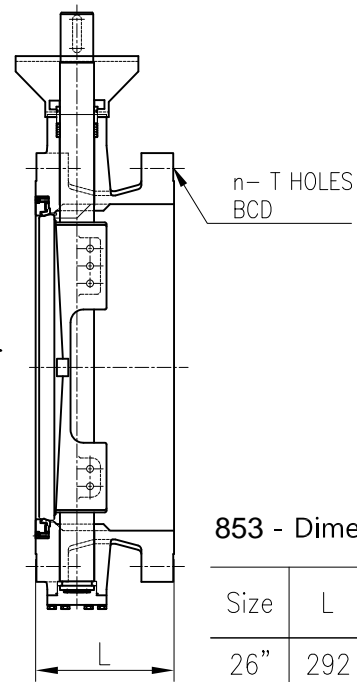
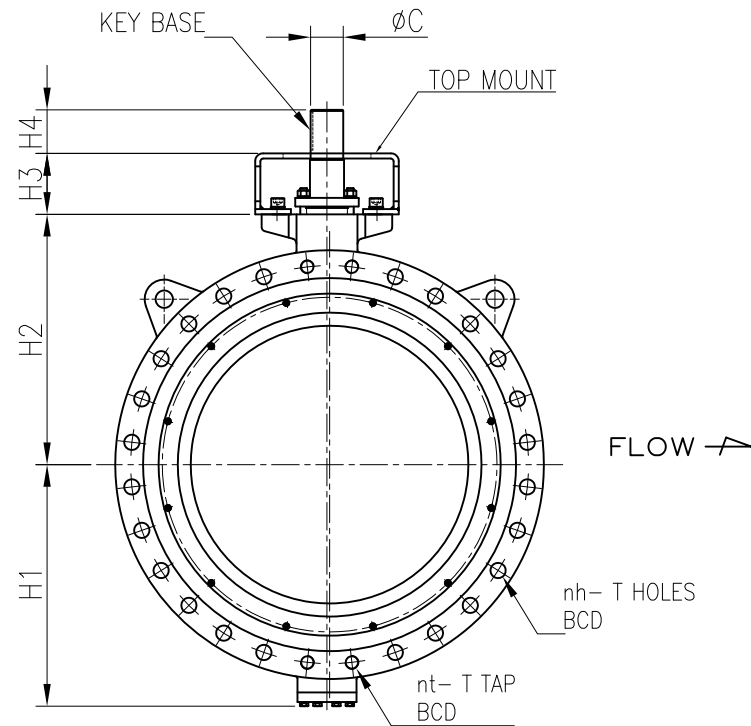
NOTES

- DESIGN STD. : API 609
- Mating FLANGE : ASME B16.5 CLASS150

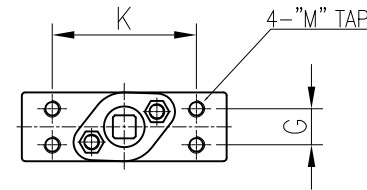
					DESCRIPTION	DWG. No.	853- 14- 24- 15LB- 011	SCALE	N/A
					H/P BUTTERFLY VALVE	TEST PRESSURE	HYDROSTATIC	SHELL	SEAT
					14" TO 24" 853 FLANGED			kgf/cm ²	kgf/cm ²
					CLASS 150 BARE STEM			AIR	kgf/cm ²
Rev. No.	DATE	DESCRIPTION	DRN.	APP.					
0	23.06.15	FOR REFERENCE	DJ,LEE	JH,YU					



No.	Part	Soft Seated		Metal Seated		Fire Safe	
		Carbon steel	Stainless steel	Carbon steel	Stainless steel	Carbon steel	Stainless steel
01	BODY	WCB	CF8M	WCB	CF8M	WCB	CF8M
02	DISC	CF8M		CF8M+HCR		CF8M	
03	STEM	17-4PH		17-4PH		17-4PH	
04	SEAT	RTFE		SS316		RTFE+SS316	
05	SEAT RETAINER	1020	SS316	1020	SS316	1020	SS316
06	PACKING	PTFE(V-PACKING)		GRAPHITE		GRAPHITE	
07	BUSH(BEARING)	SS304+Teflon	SS316+Teflon	SS304+HCR	SS316+HCR	SS304+HCR	SS316+HCR
08	GLAND BRIDGE	SS304		SS304		SS304	
09	GLAND RING	SS304+HCR		SS304+HCR		SS304+HCR	
10	BRACKET	Carbon steel		Carbon steel		Carbon steel	



** BARE MOUNT DIMENSION



853 - Dimension / ASME B16.47 SERIES A Class150 / Flange type

[unit : mm]

Size	L	n	nt	nh	BCD	T		H1	H2	H3	H4	K	G	M	C	KEY BASE	TOP MOUNT (OPTION)	WEIGHT (kg)
						TAP	HOLES											
26"	292	24	4	20	ø806.4	1 1/4" (8UN)	ø35.1	484	495	115	100	200	55	20	ø65	20x12	ISO 5211-F16,F20	727
28"	292	28	4	24	ø863.6	1 1/4" (8UN)	ø35.1	534	560	140	100	220	60	20	ø70	20x12	ISO 5211-F16,F20	784
30"	318	28	4	24	ø914.4	1 1/4" (8UN)	ø35.1	555	575	140	100	230	60	20	ø75	20x12	ISO 5211-F20,F25	866
32"	318	28	4	24	ø977.9	1 1/2" (8UN)	ø41.3	588	630	150	110	270	60	20	ø80	22x14	ISO 5211-F25,F30	1070
34"	330	32	4	28	ø1028.7	1 1/2" (8UN)	ø41.3	610	650	150	110	270	60	20	ø80	22x14	ISO 5211-F25,F30	1104
36"	330	32	4	28	ø1085.8	1 1/2" (8UN)	ø41.3	660	680	150	110	270	80	24	ø85	25x14	ISO 5211-F25,F30	1165
40"	410	36	4	32	ø1200.2	1 1/2" (8UN)	ø41.3	730	765	160	125	280	70	24	ø90	25x14	ISO 5211-F25,F30	1635
42"	410	36	4	32	ø1257.3	1 1/2" (8UN)	ø41.3	769	770	160	150	280	70	24	ø95	25x14	ISO 5211-F30,F35	1768
48"	470	44	4	40	ø1422.4	1 1/2" (8UN)	ø41.3	900	895	160	155	300	100	27	ø110	28x16	ISO 5211-F30,F35	2733

NOTES

- DESIGN STD. : API 609
- Mating FLANGE : ASME B16.34 SERIES A, CLASS150

Rev. No.	DATE	DESCRIPTION	DRN.	APP.	DESCRIPTION	DWG. No.	853- 26- 48- 15LB- 011	SCALE	N/A
0	23.06.20	FOR REFERENCE	DJ,LEE	JH,YU	H/P BUTTERFLY VALVE 26" TO 48" 853 FLANGED CLASS 150 BARE STEM	TEST PRESSURE	HYDROSTATIC	SHELL	SEAT
								kgf/cm ²	kgf/cm ²
								AIR	kgf/cm ²