

No.	Part	Soft Seated		Metal Seated		Fire Safe	
		Carbon steel	Stainless steel	Carbon steel	Stainless steel	Carbon steel	Stainless steel
01	BODY	WCB	CF8M	WCB	CF8M	WCB	CF8M
02	DISC	CF8M		CF8M+HCR		CF8M	
03	STEM	17-4PH		17-4PH		17-4PH	
04	SEAT	RTFE		SS316		RTFE+SS316	
05	SEAT RETAINER	1020	SS316	1020	SS316	1020	SS316
06	PACKING	PTFE(V-PACKING)		GRAPHITE		GRAPHITE	
07	BUSH(BEARING)	SS304+Teflon	SS316+Teflon	SS304+HCR	SS316+HCR	SS304+HCR	SS316+HCR
08	GLAND BRIDGE	SS304		SS304		SS304	
09	GLAND RING	SS304+HCR		SS304+HCR		SS304+HCR	

860 - Dimension / ASME B16.5 Class300 / Wafer type

[unit : mm]

Size	L	n	BCD	T	H1	H2	H3	FxF	E	C	KEY BASE	FT	TOP MOUNT	Weight (kg)
2"	43	2	φ127.0	φ19.1	96	125	35	11x11				13	ISO 5211-F07	4.8
2.5"	48	2	φ149.4	φ22.2	102	149	35	11x11				13	ISO 5211-F07	6.0
3"	48	2	φ168.1	φ22.2	117	160	35	11x11	40	φ16	5x5	13	ISO 5211-F07	8.0
4"	54	2	φ200.2	φ22.2	128	178	35	14x14	42	φ19	6x6	13	ISO 5211-F07	11.2
5"	57	2	φ235.0	φ22.2	146	193	35	14x14	42	φ19	6x6	13	ISO 5211-F07	16.7

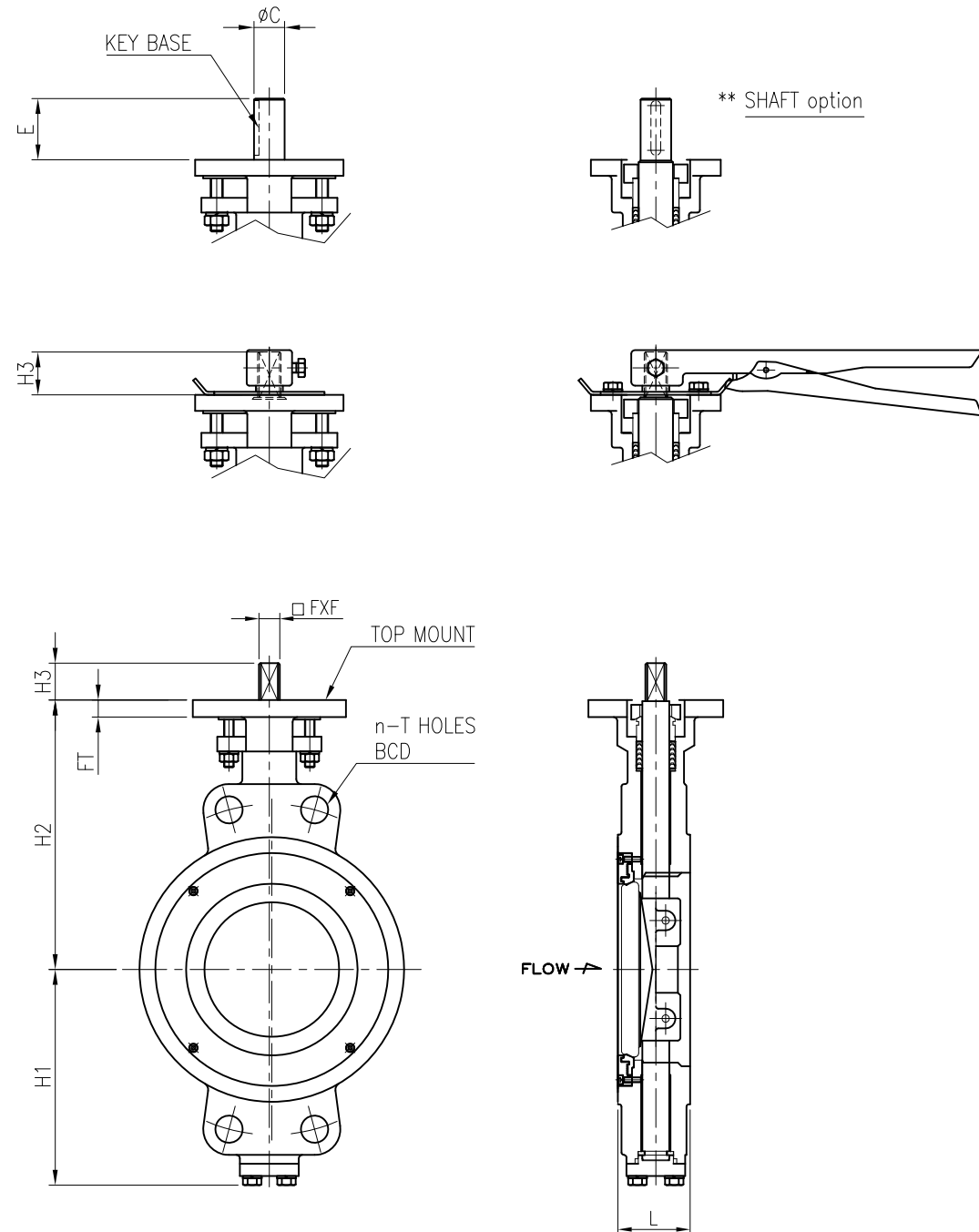
NOTES

- DESIGN STD. : API 609
- Mating FLANGE : ASME B16.5 CLASS300

Rev. No.	DATE	DESCRIPTION	DRN.	APP.
0	23.06.15	FOR REFERENCE	DJ,LEE	JH,YU

DESCRIPTION
H/P BUTTERFLY VALVE
2" TO 5" 860 WAFER
CLASS 300 BARE STEM

DWG. No.	860- 2- 5- 30WB- 010	SCALE	N/A
TEST PRESSURE	HYDROSTATIC	SHELL	SEAT
	AIR	kgf/cm ²	kgf/cm ²



No.	Part	Soft Seated		Metal Seated		Fire Safe	
		Carbon steel	Stainless steel	Carbon steel	Stainless steel	Carbon steel	Stainless steel
01	BODY	WCB	CF8M	WCB	CF8M	WCB	CF8M
02	DISC	CF8M		CF8M+HCR		CF8M	
03	STEM	17-4PH		17-4PH		17-4PH	
04	SEAT	RTFE		SS316		RTFE+SS316	
05	SEAT RETAINER	1020	SS316	1020	SS316	1020	SS316
06	PACKING	PTFE(V-PACKING)		GRAPHITE		GRAPHITE	
07	BUSH(BEARING)	SS304+Teflon	SS316+Teflon	SS304+HCR	SS316+HCR	SS304+HCR	SS316+HCR
08	GLAND BRIDGE	SS304		SS304		SS304	
09	GLAND RING	SS304+HCR		SS304+HCR		SS304+HCR	

860 - Dimension / ASME B16.5 Class300 / Wafer type

[unit : mm]

Size	L	n	BCD	T	H1	H2	H3	Fx F	E	C	KEY BASE	FT	TOP MOUNT	Weight (kg)
6"	59	4	$\phi 269.7$	$\phi 22.2$	176	220	35	17X17	42	$\phi 20$	6x6	14	ISO 5211-F10	19.0
8"	73	4	$\phi 330.2$	$\phi 25.4$	215	260	35	22x22	52	$\phi 30$	10x8	15	ISO 5211-F12	34.2

NOTES

- DESIGN STD. : API 609
- Mating FLANGE : ASME B16.5 CLASS300

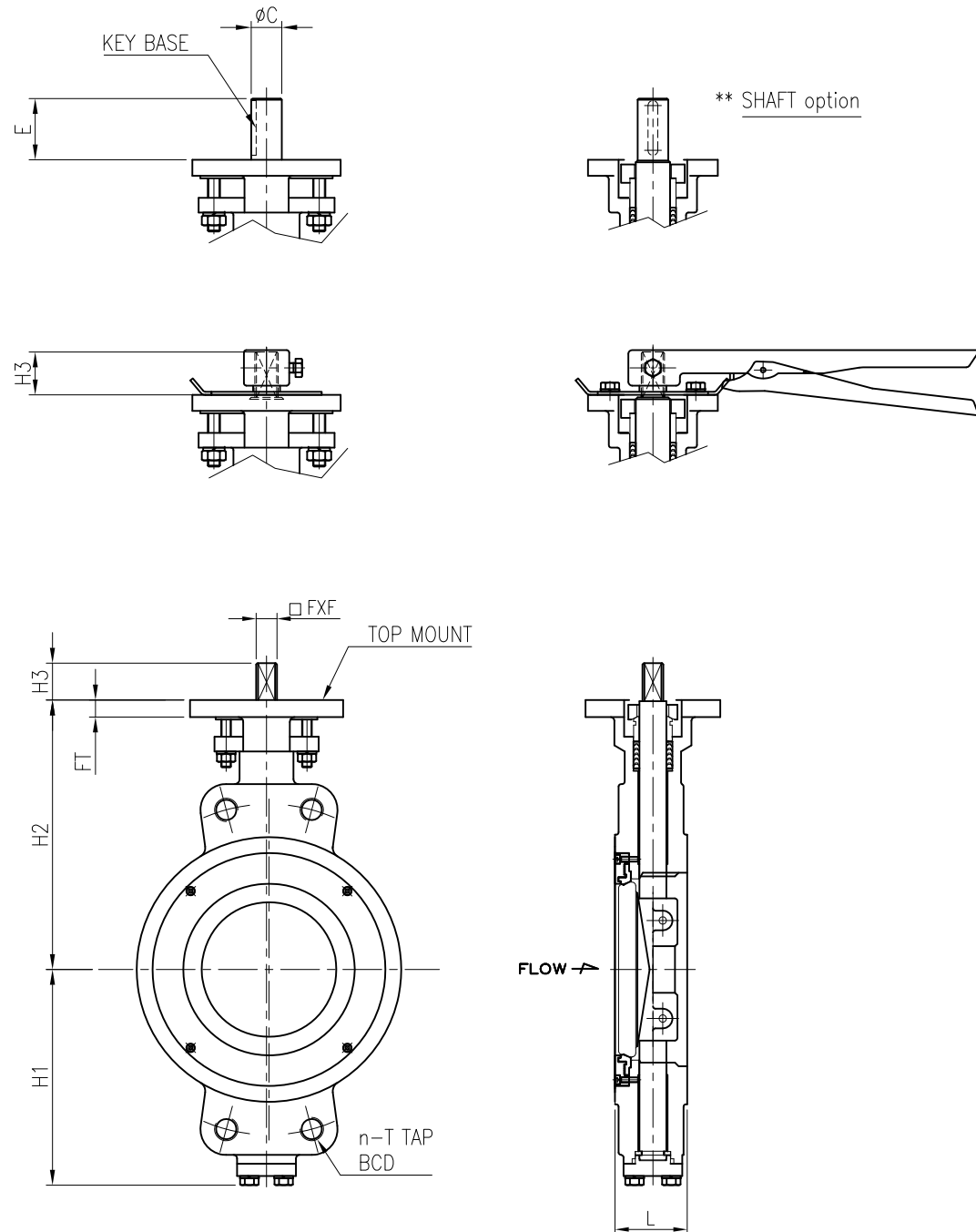
Rev. No.	DATE	DESCRIPTION	DRN.	APP.
0	23.06.15	FOR REFERENCE	DJ,LEE	JH,YU

DESCRIPTION
H/P BUTTERFLY VALVE
6" TO 8" 860 WAFER
CLASS 300 BARE STEM

DWG. No.	860- 6- 8- 30WB- 010	SCALE	N/A
TEST PRESSURE	HYDROSTATIC	SHELL	SEAT
	AIR	kgf/cm ²	kgf/cm ²



No.	Part	Soft Seated		Metal Seated		Fire Safe	
		Carbon steel	Stainless steel	Carbon steel	Stainless steel	Carbon steel	Stainless steel
01	BODY	WCB	CF8M	WCB	CF8M	WCB	CF8M
02	DISC	CF8M		CF8M+HCR		CF8M	
03	STEM	17-4PH		17-4PH		17-4PH	
04	SEAT	RTFE		SS316		RTFE+SS316	
05	SEAT RETAINER	1020	SS316	1020	SS316	1020	SS316
06	PACKING	PTFE(V-PACKING)		GRAPHITE		GRAPHITE	
07	BUSH(BEARING)	SS304+Teflon	SS316+Teflon	SS304+HCR	SS316+HCR	SS304+HCR	SS316+HCR
08	GLAND BRIDGE	SS304		SS304		SS304	
09	GLAND RING	SS304+HCR		SS304+HCR		SS304+HCR	



860 - Dimension / ASME B16.5 Class300 / Wafer type

[unit : mm]

Size	L	n	BCD	T	H1	H2	H3	Fx	E	C	KEY BASE	FT	TOP MOUNT	Weight (kg)
10"	83	4	ø387.4	1" UNC	269	290	35	22x22	65	ø32	10x8	16	ISO 5211-F12	48.2
12"	92	4	ø450.8	1 1/8" 8UN	295	325	35	27x27	65	ø40	12x8	16	ISO 5211-F12	64.4

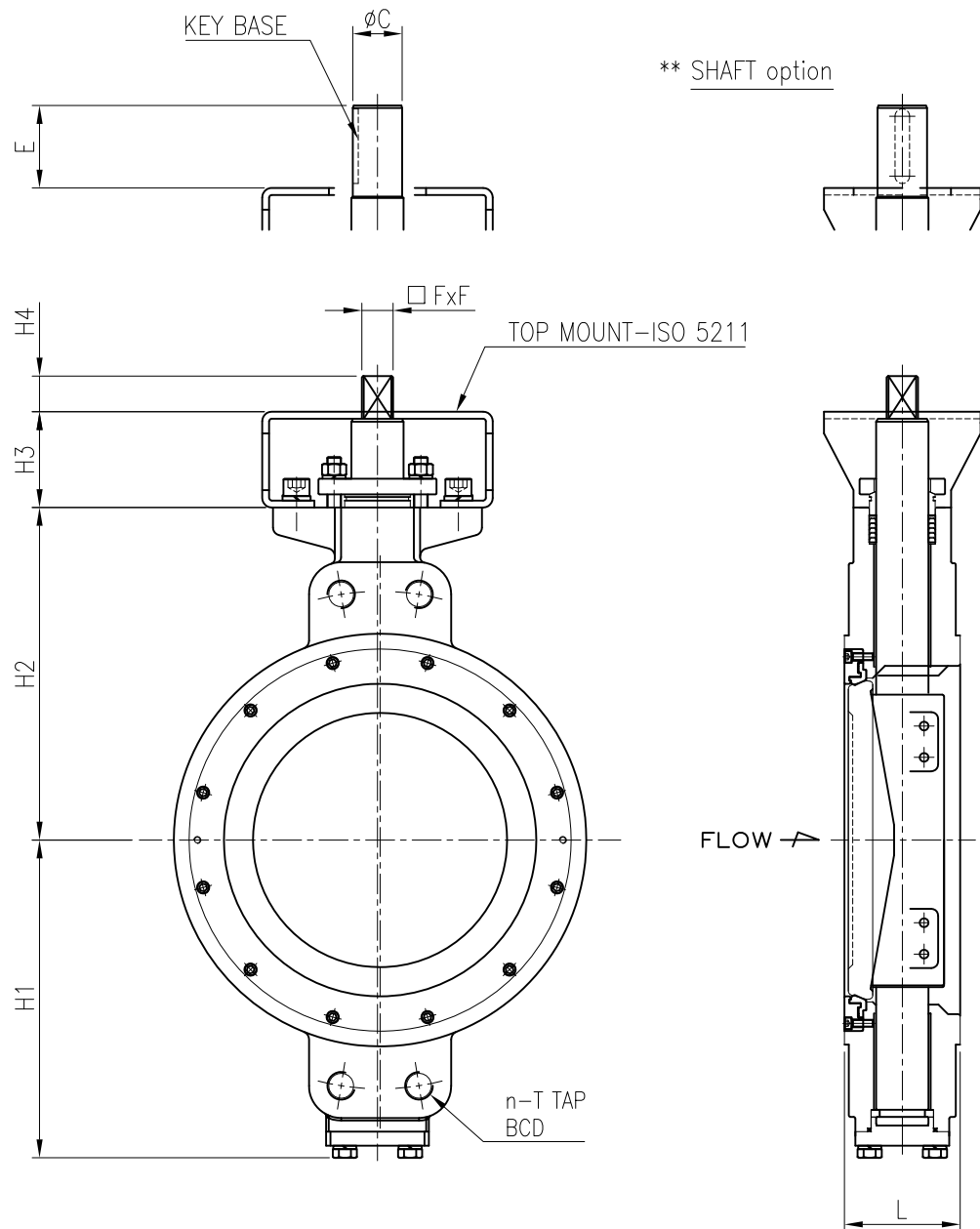
NOTES

- DESIGN STD. : API 609
- Mating FLANGE : ASME B16.5 CLASS300

Rev. No.	DATE	DESCRIPTION	DRN.	APP.
0	23.06.15	FOR REFERENCE	DJ,LEE	JH,YU

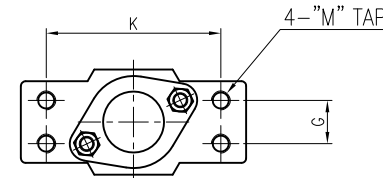
DESCRIPTION
H/P BUTTERFLY VALVE
10" TO 12" 860 WAFER
CLASS 300 BARE STEM

DWG. No.	860- 10- 12- 30WB- 010	SCALE	N/A
TEST PRESSURE	HYDROSTATIC	SHELL	SEAT
	AIR	kgf/cm ²	kgf/cm ²



** SHAFT option

** BARE MOUNT DIMENSION



No.	Part	Soft Seated		Metal Seated		Fire Safe	
		Carbon steel	Stainless steel	Carbon steel	Stainless steel	Carbon steel	Stainless steel
01	BODY	WCB	CF8M	WCB	CF8M	WCB	CF8M
02	DISC	CF8M		CF8M+HCR		CF8M	
03	STEM	17-4PH		17-4PH		17-4PH	
04	SEAT	RTFE		SS316		RTFE+SS316	
05	SEAT RETAINER	1020	SS316	1020	SS316	1020	SS316
06	PACKING	PTFE(V-PACKING)		GRAPHITE		GRAPHITE	
07	BUSH(BEARING)	SS304+Teflon	SS316+Teflon	SS304+HCR	SS316+HCR	SS304+HCR	SS316+HCR
08	GLAND BRIDGE	SS304		SS304		SS304	
09	GLAND RING	SS304+HCR		SS304+HCR		SS304+HCR	
10	BRACKET	Carbon steel		Carbon steel		Carbon steel	

860 - Dimension / ASME B16.5 Class300 / Lug type [unit : mm]

Size	L	n	BCD	T	H1	H2	H3	H4	K	G	M	FxF	E	C	KEY BASE	TOP MOUNT	Weight (kg)
14"	117	4	ø514.4	1 1/8" 8UN	325	355	100	48	186	46	20	36x36	75	ø42	12x8	ISO 5211-F14,F16	84.2
16"	133	4	ø571.5	1 1/4" 8UN	365	392	110	48	186	46	20	36x36	90	ø55	16x10	ISO 5211-F14,F16	138.6
18"	149	4	ø628.6	1 1/4" 8UN	410	418	110	48	186	46	20	36x36	90	ø55	16x10	ISO 5211-F14,F16	157.5
20"	159	4	ø685.8	1 1/4" 8UN	450	475	120	50	225	76	20	46x46	100	ø60	18x11	ISO 5211-F25	216.2
24"	181	4	ø812.8	1 1/2" 8UN	522	530	120		270	76	20		100	ø75	20x12	ISO 5211-F25	333.3

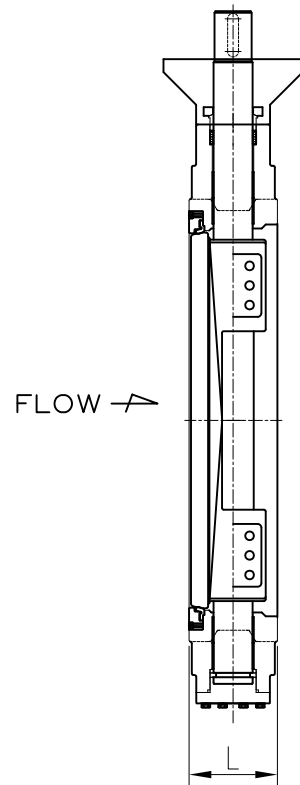
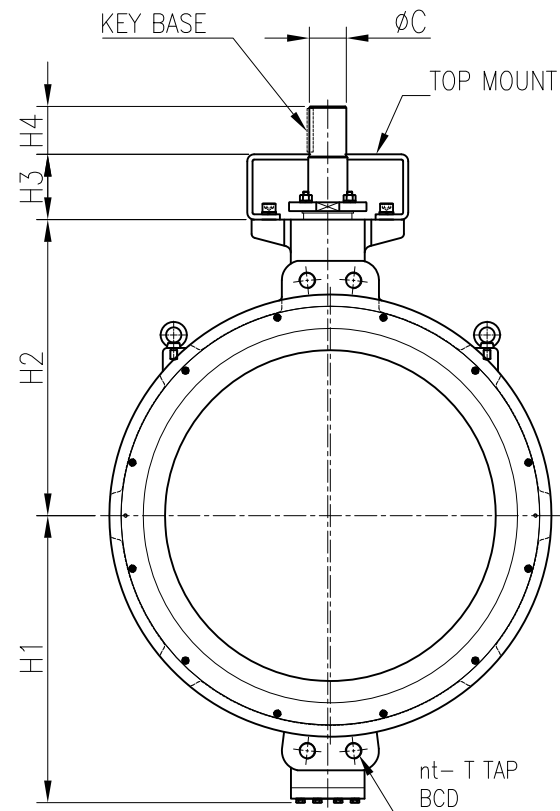
NOTES

- DESIGN STD. : API 609
- Mating FLANGE : ASME B16.5 CLASS300

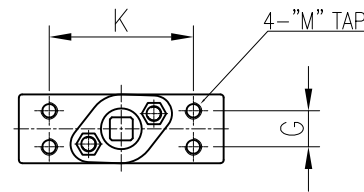
					DESCRIPTION	DWG. No.	860- 14- 24- 30WB- 011	SCALE	N/A
					H/P BUTTERFLY VALVE 14" TO 24" 860 WAFER CLASS 300 BARE STEM	TEST PRESSURE	SHELL		SEAT
							HYDROSTATIC	kgf/cm ²	kgf/cm ²
							AIR	kgf/cm ²	kgf/cm ²
△	23.06.15	FOR REFERENCE	DJ,LEE	JH,YU					
Rev. No.	DATE	DESCRIPTION	DRN.	APP.					



No.	Part	Soft Seated		Metal Seated		Fire Safe	
		Carbon steel	Stainless steel	Carbon steel	Stainless steel	Carbon steel	Stainless steel
01	BODY	WCB	CF8M	WCB	CF8M	WCB	CF8M
02	DISC	CF8M		CF8M+HCR		CF8M	
03	STEM	17-4PH		17-4PH		17-4PH	
04	SEAT	RTFE		SS316		RTFE+SS316	
05	SEAT RETAINER	1020	SS316	1020	SS316	1020	SS316
06	PACKING	PTFE(V-PACKING)		GRAPHITE		GRAPHITE	
07	BUSH(BEARING)	SS304+Teflon	SS316+Teflon	SS304+HCR	SS316+HCR	SS304+HCR	SS316+HCR
08	GLAND BRIDGE	SS304		SS304		SS304	
09	GLAND RING	SS304+HCR		SS304+HCR		SS304+HCR	
10	BRACKET	Carbon steel		Carbon steel		Carbon steel	



** BARE MOUNT DIMENSION



860 - Dimension / ASME B16.47 SERIES A Class300 / Wafer type

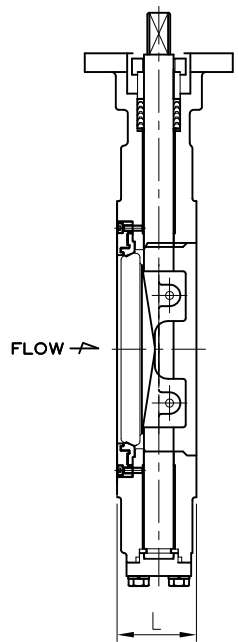
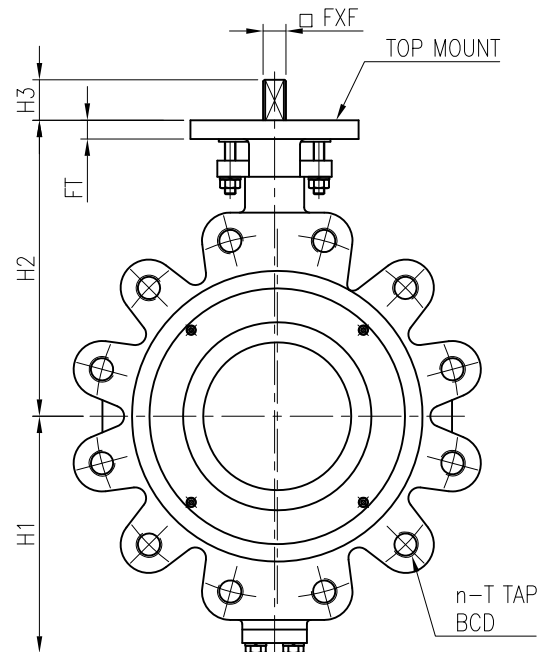
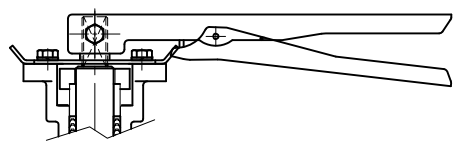
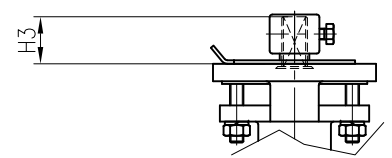
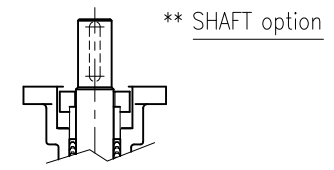
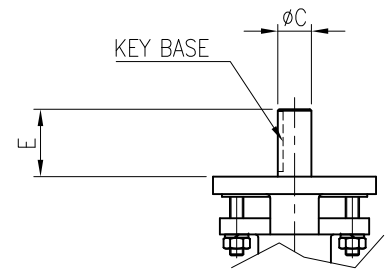
[unit : mm]

Size	L	total (n)	nt	BCD	T	H1	H2	H3	H4	K	G	M	C	KEY BASE	TOP MOUNT (OPTION)	WEIGHT (kg)
26"	210	28	4	ø876.3	1 5/8" (8UN)	616	530	160	110	270	60	20	ø80	22x14	ISO 5211-F20,F25	445
28"	229	28	4	ø939.8	1 5/8" (8UN)	641	530	160	110	270	60	20	ø80	22x14	ISO 5211-F20,F25	501
30"	230	28	4	ø997.0	1 3/4" (8UN)	668	575	160	110	270	80	24	ø85	25x14	ISO 5211-F20,F25	632
32"	241	28	4	ø1054.1	1 7/8" (8UN)	683	600	160	125	280	70	24	ø90	25x14	ISO 5211-F25,F30	714
34"	241	28	4	ø1104.9	1 7/8" (8UN)	736	650	180	130	300	80	27	ø100	28x16	ISO 5211-F25,F30	845
36"	271	32	4	ø1168.4	2" (8UN)	791	675	180	130	300	100	27	ø120	32x18	ISO 5211-F25,F30	942
40"	300	32	4	ø1155.7	1 5/8" (8UN)	737	765	180	150	320	110	30	ø135	36x20	ISO 5211-F25,F30	1256
42"	300	32	4	ø1206.5	1 5/8" (8UN)	776	770	180	150	320	110	30	ø135	36x20	ISO 5211-F30,F35	1598
48"	320	32	4	ø1371.6	1 7/8" (8UN)	900	895	180	180	350	120	30	ø160	40x22	ISO 5211-F30,F35	2108

NOTES

- DESIGN STD. : API 609
- Mating FLANGE : ASME B16.34 SERIES A, CLASS300

					DESCRIPTION	DWG. No.	860- 26- 48- 30WB- 011	SCALE	N/A	
					H/P BUTTERFLY VALVE	TEST PRESSURE	HYDROSTATIC	SHELL	SEAT	
					26" TO 48" 860 WAFER			AIR	kgf/cm ²	kgf/cm ²
					CLASS 300 BARE STEM			kgf/cm ²	kgf/cm ²	
Rev. No.	DATE	DESCRIPTION	DRN.	APP.						
0	23.06.20	FOR REFERENCE	DJ,LEE	JH,YU						



No.	Part	Soft Seated		Metal Seated		Fire Safe	
		Carbon steel	Stainless steel	Carbon steel	Stainless steel	Carbon steel	Stainless steel
01	BODY	WCB	CF8M	WCB	CF8M	WCB	CF8M
02	DISC	CF8M		CF8M+HCR		CF8M	
03	STEM	17-4PH		17-4PH		17-4PH	
04	SEAT	RTFE		SS316		RTFE+SS316	
05	SEAT RETAINER	1020	SS316	1020	SS316	1020	SS316
06	PACKING	PTFE(V-PACKING)		GRAPHITE		GRAPHITE	
07	BUSH(BEARING)	SS304+Teflon	SS316+Teflon	SS304+HCR	SS316+HCR	SS304+HCR	SS316+HCR
08	GLAND BRIDGE	SS304		SS304		SS304	
09	GLAND RING	SS304+HCR		SS304+HCR		SS304+HCR	

861 - Dimension / ASME B16.5 Class300 / Lug type [unit : mm]

Size	L	n	BCD	T	H1	H2	H3	FxF	E	C	KEY BASE	FT	TOP MOUNT	Weight (kg)
2"	43	8	φ127.0	5/8" UNC	96	125	35	11x11				13	ISO 5211-F07	6.1
2.5"	48	8	φ149.4	3/4" UNC	102	149	35	11x11				13	ISO 5211-F07	8.7
3"	48	8	φ168.1	3/4" UNC	117	160	35	11x11	40	φ16	5x5	13	ISO 5211-F07	9.5
4"	54	8	φ200.2	3/4" UNC	128	178	35	14x14	42	φ19	6x6	13	ISO 5211-F07	14.6
5"	57	8	φ235.0	3/4" UNC	146	193	35	14x14	42	φ19	6x6	13	ISO 5211-F07	23.3
6"	59	12	φ269.7	3/4" UNC	176	220	35	17x17	42	φ20	6x6	14	ISO 5211-F10	27.3
8"	73	12	φ330.2	7/8" UNC	216	260	35	22x22	52	φ30	10x8	15	ISO 5211-F12	45.5
10"	83	16	φ387.4	1" UNC	269	290	35	22x22	65	φ32	10x8	16	ISO 5211-F12	64.9
12"	92	16	φ450.8	1 1/8" 8UN	295	325	35	27x27	65	φ40	12x8	16	ISO 5211-F12	100.7

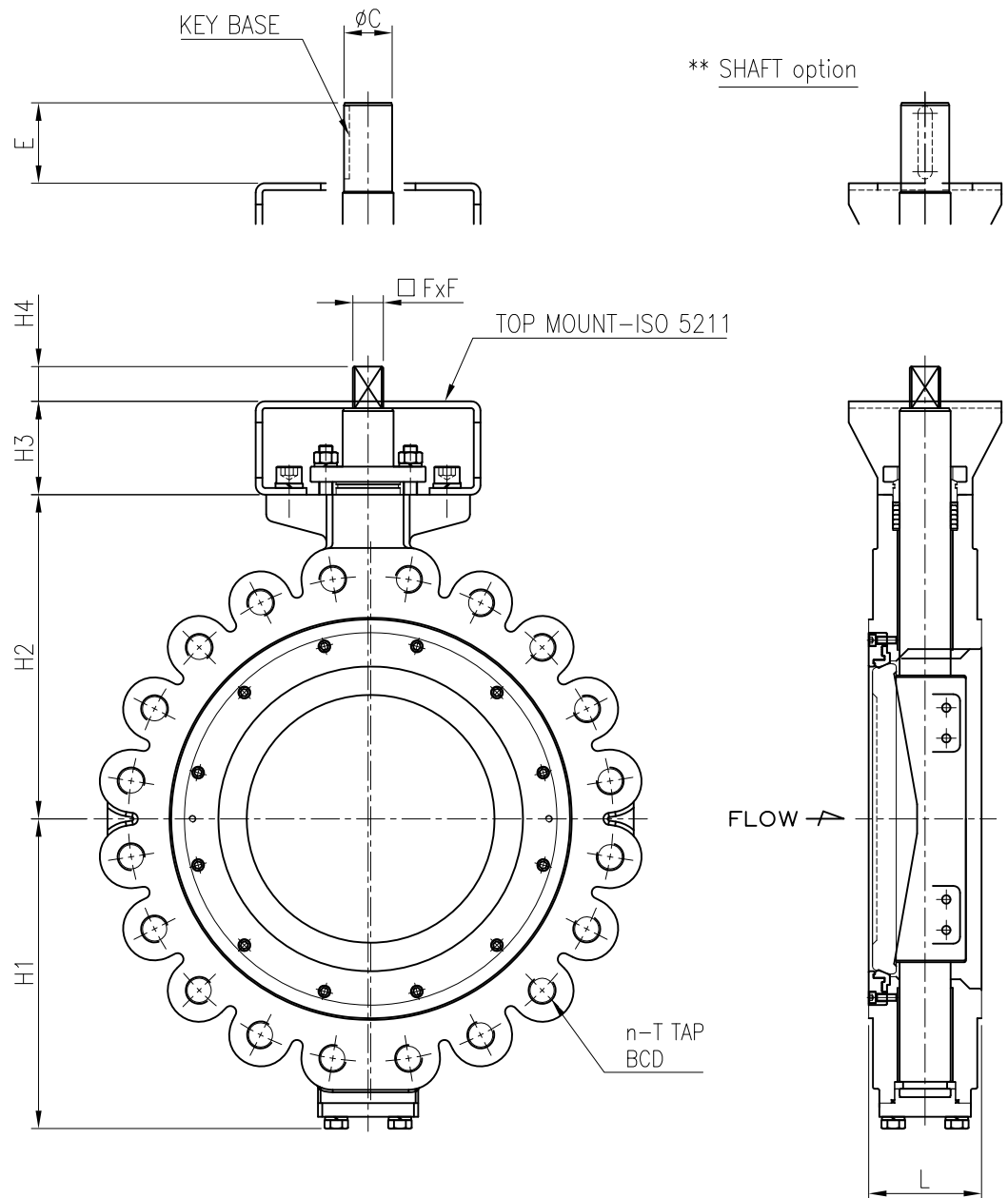
NOTES

- DESIGN STD. : API 609
- Mating FLANGE : ASME B16.5 CLASS300

Rev. No.	DATE	DESCRIPTION	DRN.	APP.
0	23.06.15	FOR REFERENCE	DJ,LEE	JH,YU

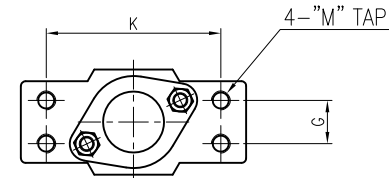
DESCRIPTION
H/P BUTTERFLY VALVE
2" TO 12" 861 LUG
CLASS 300 BARE STEM

DWG. No.	861- 2- 12- 30LB- 010	SCALE	N/A
TEST PRESSURE	HYDROSTATIC	SHELL	SEAT
	AIR	kgf/cm ²	kgf/cm ²



** SHAFT option

** BARE MOUNT DIMENSION



No.	Part	Soft Seated		Metal Seated		Fire Safe	
		Carbon steel	Stainless steel	Carbon steel	Stainless steel	Carbon steel	Stainless steel
01	BODY	WCB	CF8M	WCB	CF8M	WCB	CF8M
02	DISC	CF8M		CF8M+HCR		CF8M	
03	STEM	17-4PH		17-4PH		17-4PH	
04	SEAT	RTFE		SS316		RTFE+SS316	
05	SEAT RETAINER	1020	SS316	1020	SS316	1020	SS316
06	PACKING	PTFE(V-PACKING)		GRAPHITE		GRAPHITE	
07	BUSH(BEARING)	SS304+Teflon	SS316+Teflon	SS304+HCR	SS316+HCR	SS304+HCR	SS316+HCR
08	GLAND BRIDGE	SS304		SS304		SS304	
09	GLAND RING	SS304+HCR		SS304+HCR		SS304+HCR	
10	BRACKET	Carbon steel		Carbon steel		Carbon steel	

861 - Dimension / ASME B16.5 Class300 / Lug type

[unit : mm]

Size	L	n	BCD	T	H1	H2	H3	H4	K	G	M	FxF	E	C	KEY BASE	TOP MOUNT	Weight (kg)
14"	117	20	ø514.4	1 1/8" 8UN	325	355	100	48	186	46	20	36x36	75	ø42	12x8	ISO 5211-F14,F16	178
16"	133	20	ø571.5	1 1/4" 8UN	365	392	110	48	186	46	20	36x36	90	ø55	16x10	ISO 5211-F14,F16	216
18"	149	24	ø628.6	1 1/4" 8UN	410	418	110	48	186	46	20	36x36	90	ø55	16x10	ISO 5211-F14,F16	256
20"	159	24	ø685.8	1 1/4" 8UN	450	475	120	50	225	76	20	46x46	100	ø60	18x11	ISO 5211-F25	361
24"	181	24	ø812.8	1 1/2" 8UN	522	530	120	270	76	20			100	ø75	20x12	ISO 5211-F25	579

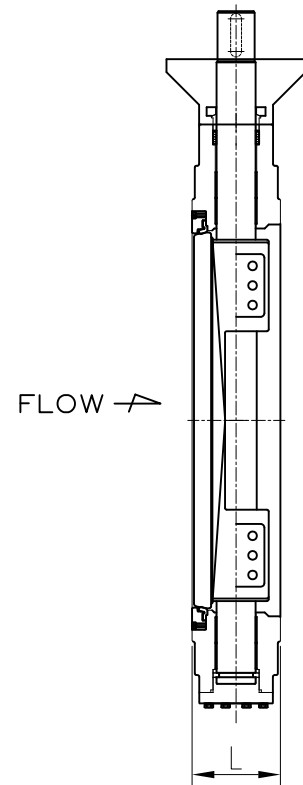
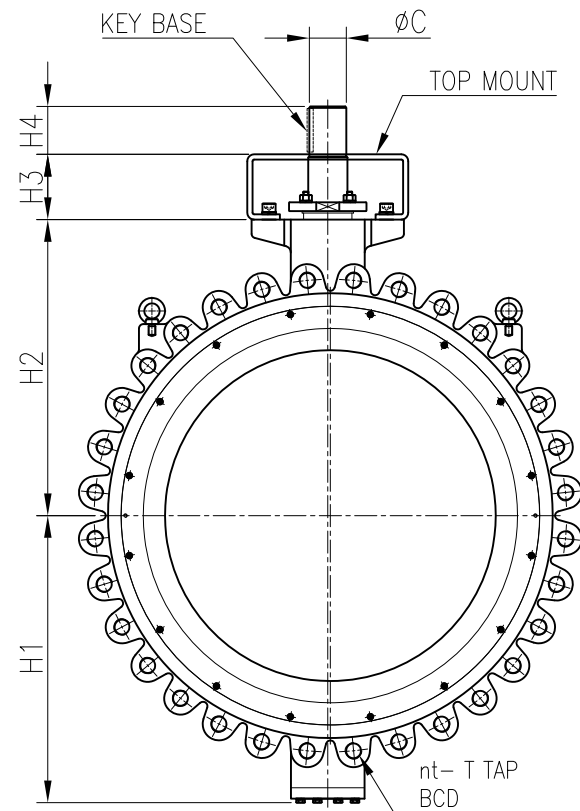
NOTES

- DESIGN STD. : API 609
- Mating FLANGE : ASME B16.5 CLASS300

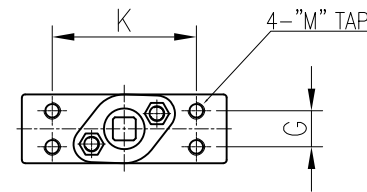
					DESCRIPTION	DWG. No.	861- 14- 24- 30LB- 011	SCALE	N/A
					H/P BUTTERFLY VALVE	TEST PRESSURE	HYDROSTATIC	SHELL	SEAT
					14" TO 24" 861 LUG			kgf/cm ²	kgf/cm ²
					CLASS 300 BARE STEM			AIR	kgf/cm ²
Rev. No.	DATE	DESCRIPTION	DRN.	APP.					
0	23.06.15	FOR REFERENCE	DJ,LEE	JH,YU					



No.	Part	Soft Seated		Metal Seated		Fire Safe	
		Carbon steel	Stainless steel	Carbon steel	Stainless steel	Carbon steel	Stainless steel
01	BODY	WCB	CF8M	WCB	CF8M	WCB	CF8M
02	DISC	CF8M		CF8M+HCR		CF8M	
03	STEM	17-4PH		17-4PH		17-4PH	
04	SEAT	RTFE		SS316		RTFE+SS316	
05	SEAT RETAINER	1020	SS316	1020	SS316	1020	SS316
06	PACKING	PTFE(V-PACKING)		GRAPHITE		GRAPHITE	
07	BUSH(BEARING)	SS304+Teflon	SS316+Teflon	SS304+HCR	SS316+HCR	SS304+HCR	SS316+HCR
08	GLAND BRIDGE	SS304		SS304		SS304	
09	GLAND RING	SS304+HCR		SS304+HCR		SS304+HCR	
10	BRACKET	Carbon steel		Carbon steel		Carbon steel	



** BARE MOUNT DIMENSION



861 - Dimension / ASME B16.47 SERIES A Class300 / Lug type [unit : mm]

Size	L	n	BCD	T	H1	H2	H3	H4	K	G	M	C	KEY BASE	TOP MOUNT (OPTION)	WEIGHT (kg)
26"	165	28	ø876.3	1 5/8" (8UN)	616	530	160	110	270	60	20	ø80	22x14	ISO 5211-F20,F25	712
28"	165	28	ø939.8	1 5/8" (8UN)	641	530	160	110	270	60	20	ø80	22x14	ISO 5211-F20,F25	785
30"	190	28	ø997.0	1 3/4" (8UN)	668	575	160	110	270	80	24	ø85	25x14	ISO 5211-F20,F25	930
32"	190	28	ø1054.1	1 7/8" (8UN)	683	600	160	125	280	70	24	ø90	25x14	ISO 5211-F25,F30	968
34"	203	32	ø1104.9	1 7/8" (8UN)	736	650	180	130	300	80	27	ø100	28x16	ISO 5211-F25,F30	1140
36"	203	32	ø1168.4	2" (8UN)	791	675	180	130	300	100	27	ø120	32x18	ISO 5211-F25,F30	1283
40"	216	36	ø1155.7	1 5/8" (8UN)	737	765	180	150	320	110	30	ø135	36x20	ISO 5211-F25,F30	1692
42"	251	36	ø1206.5	1 5/8" (8UN)	776	770	180	150	320	110	30	ø135	36x20	ISO 5211-F30,F35	2170
48"	254	44	ø1371.6	1 7/8" (8UN)	900	895	180	180	350	120	30	ø160	40x22	ISO 5211-F30,F35	2995

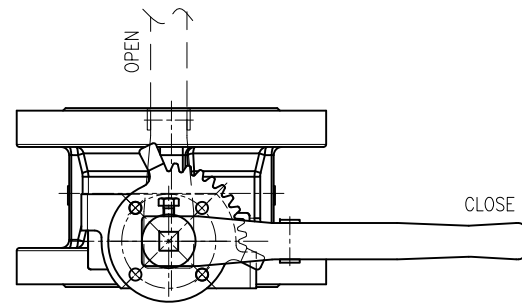
NOTES

- DESIGN STD. : API 609
- Mating FLANGE : ASME B16.34 SERIES A, CLASS300

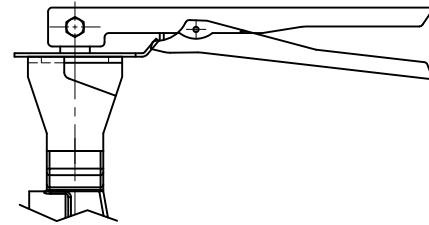
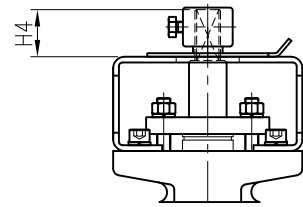
					DESCRIPTION	DWG. No.	861- 26- 48- 30LB- 011		SCALE	N/A
					H/P BUTTERFLY VALVE	TEST PRESSURE	HYDROSTATIC	SHELL		SEAT
					26" TO 48" 861 LUG			kgf/cm ²		kgf/cm ²
					CLASS 300 BARE STEM			AIR		kgf/cm ²
Rev. No.	DATE	DESCRIPTION	DRN.	APP.						
0	23.06.20	FOR REFERENCE	DJ,LEE	JH,YU						



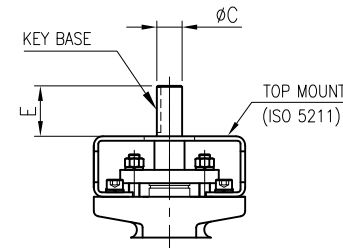
No.	Part	Soft Seated		Metal Seated		Fire Safe	
		Carbon steel	Stainless steel	Carbon steel	Stainless steel	Carbon steel	Stainless steel
01	BODY	WCB	CF8M	WCB	CF8M	WCB	CF8M
02	DISC	CF8M		CF8M+HCR		CF8M	
03	STEM	17-4PH		17-4PH		17-4PH	
04	SEAT	RTFE		SS316		RTFE+SS316	
05	SEAT RETAINER	1020	SS316	1020	SS316	1020	SS316
06	PACKING	PTFE(V-PACKING)		GRAPHITE		GRAPHITE	
07	BUSH(BEARING)	SS304+Teflon	SS316+Teflon	SS304+HCR	SS316+HCR	SS304+HCR	SS316+HCR
08	GLAND BRIDGE	SS304		SS304		SS304	
09	GLAND RING	SS304+HCR		SS304+HCR		SS304+HCR	



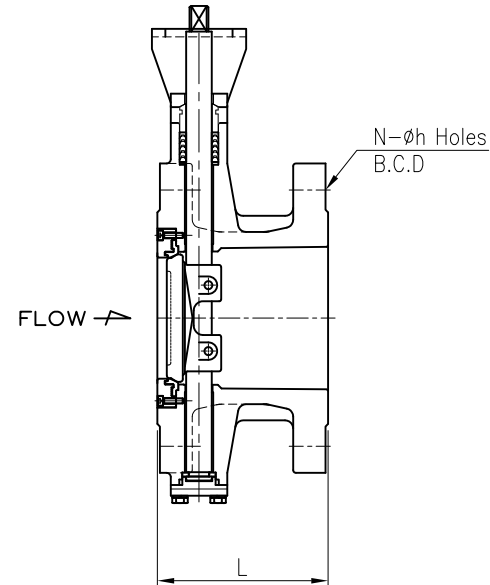
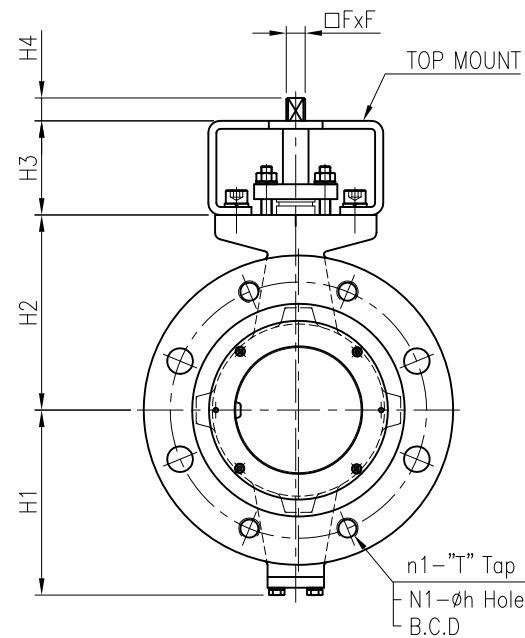
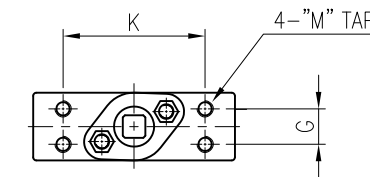
** LEVER option



** SHAFT option



** BARE MOUNT DIMENSION



863 - Dimension / ASME B16.5 Class300 / Flange type

[unit : mm]

Size	L	B.C.D	n1	T(Tap)	N	N1	h	H1	H2	H3	H4	K	G	M	FxF	E	C	KEY BASE	TOP MOUNT	Weight (kg)
3"	180	ø168.1	4	3/4"UNC	8	4	ø22.2	122	130	65	35	88	22	10	11x11	40	ø16	5x5	ISO 5211-F05,F07	27.3
4"	190	ø200.2	4	3/4"UNC	8	4	ø22.2	146	160	70	35	88	22	10	14x14	42	ø19	6x6	ISO 5211-F07,F10	33.7
5"	210	ø235.0	4	3/4"UNC	8	4	ø22.2	146	165	70	35	88	22	10	14x14	42	ø19	6x6	ISO 5211-F07,F10	42.5
6"	210	ø269.7	4	3/4"UNC	12	8	ø22.2	176	187	70	35	94	24	10	17X17	42	ø20	6x6	ISO 5211-F10,F12	51.0
8"	230	ø330.2	4	7/8"UNC	12	8	ø25.4	215	230	75	35	104	32	12	22x22	52	ø30	10x8	ISO 5211-F10,F12	93.4
10"	250	ø387.4	4	1" UNC	16	12	ø28.4	269	290	80	35	142	40	16	22x22	65	ø32	10x8	ISO 5211-F12,F14	155.7
12"	270	ø450.8	4	1 1/8" 8UN	16	12	ø31.8	295	320	90	35	150	40	16	27x27	65	ø40	12x8	ISO 5211-F12,F14	195.7

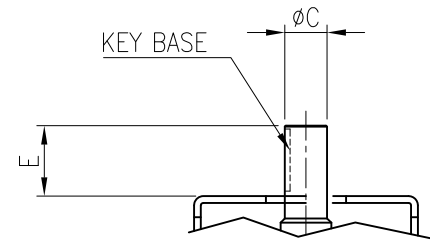
NOTES

- DESIGN STD. : API 609
- Mating FLANGE : ASME B16.5 CLASS300

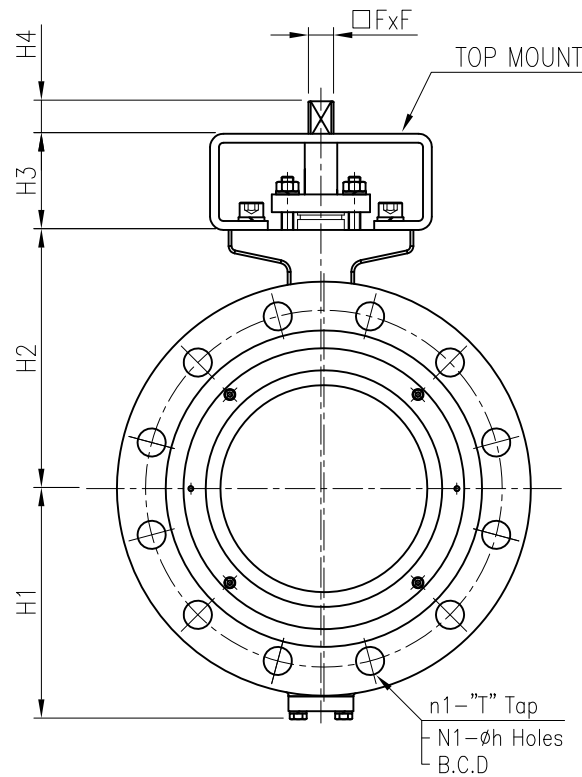
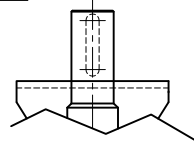
					DESCRIPTION	DWG. No.	863- 3- 12- 30FB- 010	SCALE	N/A	
					H/P BUTTERFLY VALVE	TEST PRESSURE	HYDROSTATIC	SHELL	SEAT	
					3" TO 12" 863 FLANGED			AIR	kgf/cm ²	kgf/cm ²
					CLASS 300 BARE STEM				kgf/cm ²	kgf/cm ²
Rev. No.	DATE	DESCRIPTION	DRN.	APP.						
0	23.06.15	FOR REFERENCE	DJ,LEE	JH,YU						



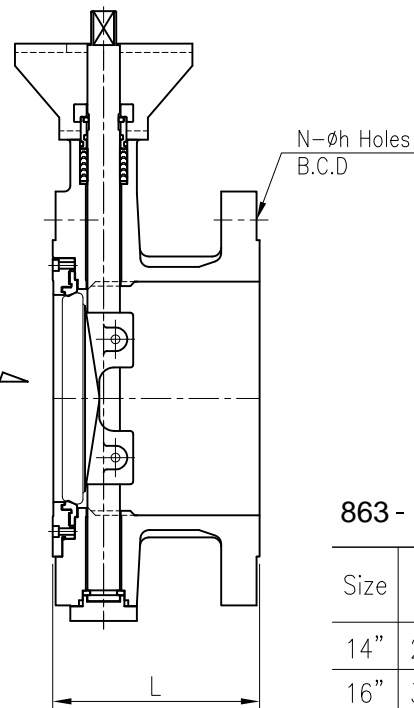
No.	Part	Soft Seated		Metal Seated		Fire Safe	
		Carbon steel	Stainless steel	Carbon steel	Stainless steel	Carbon steel	Stainless steel
01	BODY	WCB	CF8M	WCB	CF8M	WCB	CF8M
02	DISC	CF8M		CF8M+HCR		CF8M	
03	STEM	17-4PH		17-4PH		17-4PH	
04	SEAT	RTFE		SS316		RTFE+SS316	
05	SEAT RETAINER	1020	SS316	1020	SS316	1020	SS316
06	PACKING	PTFE(V-PACKING)		GRAPHITE		GRAPHITE	
07	BUSH(BEARING)	SS304+Teflon	SS316+Teflon	SS304+HCR	SS316+HCR	SS304+HCR	SS316+HCR
08	GLAND BRIDGE	SS304		SS304		SS304	
09	GLAND RING	SS304+HCR		SS304+HCR		SS304+HCR	
10	BRACKET	Carbon steel		Carbon steel		Carbon steel	



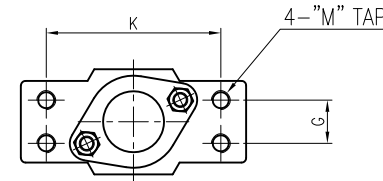
** SHAFT option



FLOW →



** BARE MOUNT DIMENSION



863 - Dimension / ASME B16.5 Class300 / Flange type [unit : mm]

Size	L	B.C.D	n1	T(Tap)	N	N1	h	H1	H2	H3	H4	K	G	M	FxF	E	C	KEY BASE	TOP MOUNT	Weight (kg)
14"	290	ø514.4	4	1 1/8" 8UN	20	16	ø31.8	325	355	100	48	186	46	20	36x36	75	ø42	12x8	ISO 5211-F14,F16	284
16"	310	ø571.5	4	1 1/4" 8UN	20	16	ø35.1	365	392	110	48	186	46	20	36x36	90	ø55	16x10	ISO 5211-F14,F16	422
18"	330	ø628.6	4	1 1/4" 8UN	24	20	ø35.1	410	418	110	48	186	46	20	36x36	90	ø55	16x10	ISO 5211-F14,F16	466
20"	350	ø685.8	4	1 1/4" 8UN	24	20	ø35.1	450	475	120	50	225	76	20	46X46	100	ø60	18x11	ISO 5211-F25	598
24"	390	ø812.8	4	1 1/2" 8UN	24	20	ø41.1	522	530	120	50	270	76	20	46X46	100	ø75	20x12	ISO 5211-F25	790

NOTES

- DESIGN STD. : API 609
- Mating FLANGE : ASME B16.5 CLASS150

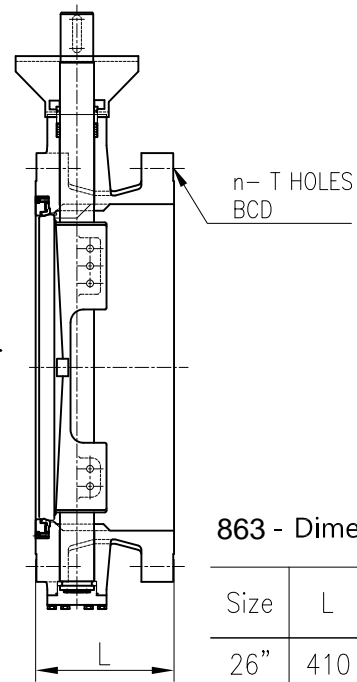
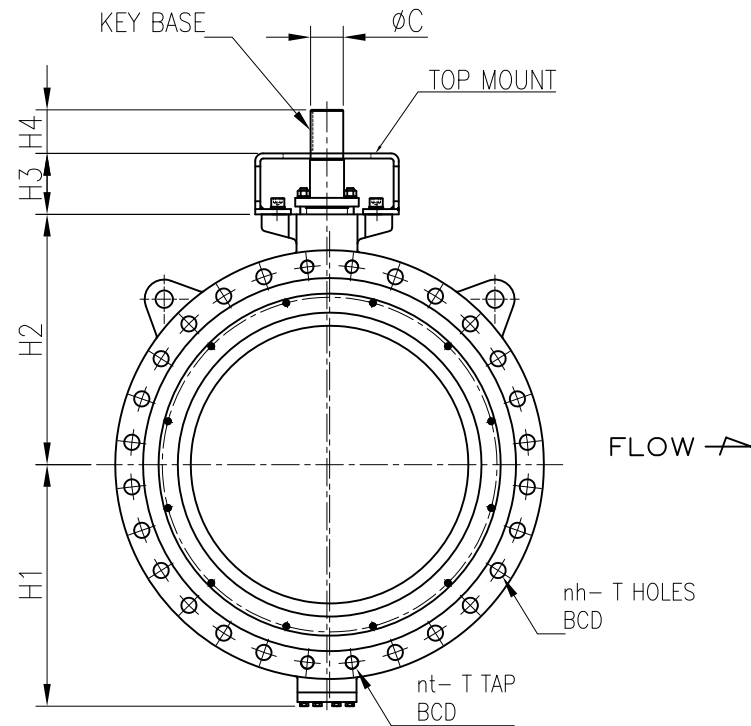
Rev. No.	DATE	DESCRIPTION	DRN.	APP.
0	23.06.15	FOR REFERENCE	DJ,LEE	JH,YU

DESCRIPTION
H/P BUTTERFLY VALVE
14" TO 24" 863 FLANGED
CLASS 300 BARE STEM

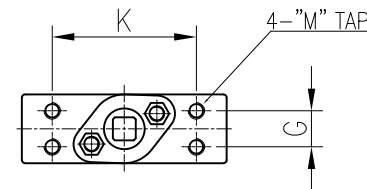
DWG. No.	863- 14- 24- 30FB- 011	SCALE	N/A
TEST PRESSURE	HYDROSTATIC	SHELL	SEAT
	AIR	kgf/cm ²	kgf/cm ²



No.	Part	Soft Seated		Metal Seated		Fire Safe	
		Carbon steel	Stainless steel	Carbon steel	Stainless steel	Carbon steel	Stainless steel
01	BODY	WCB	CF8M	WCB	CF8M	WCB	CF8M
02	DISC	CF8M		CF8M+HCR		CF8M	
03	STEM	17-4PH		17-4PH		17-4PH	
04	SEAT	RTFE		SS316		RTFE+SS316	
05	SEAT RETAINER	1020	SS316	1020	SS316	1020	SS316
06	PACKING	PTFE(V-PACKING)		GRAPHITE		GRAPHITE	
07	BUSH(BEARING)	SS304+Teflon	SS316+Teflon	SS304+HCR	SS316+HCR	SS304+HCR	SS316+HCR
08	GLAND BRIDGE	SS304		SS304		SS304	
09	GLAND RING	SS304+HCR		SS304+HCR		SS304+HCR	
10	BRACKET	Carbon steel		Carbon steel		Carbon steel	



** BARE MOUNT DIMENSION



863 - Dimension / ASME B16.47 SERIES A Class300 / Flange type

[unit : mm]

Size	L	n	nt	nh	BCD	T		H1	H2	H3	H4	K	G	M	C	KEY BASE	TOP MOUNT (OPTION)	WEIGHT (kg)
						TAP	HOLES											
26"	410	28	4	24	ø876.3	1 5/8" (8UN)	ø44.5	484	495	115	100	200	55	20	ø65	20x12	ISO 5211-F16,F20	1090
28"	430	28	4	24	ø939.8	1 5/8" (8UN)	ø44.5	534	560	140	100	220	60	20	ø70	20x12	ISO 5211-F16,F20	1176
30"	450	28	4	24	ø997.0	1 3/4" (8UN)	ø47.6	555	575	140	100	230	60	20	ø75	20x12	ISO 5211-F20,F25	1299
32"	470	28	4	24	ø1054.1	1 7/8" (8UN)	ø50.8	588	630	150	110	270	60	20	ø80	22x14	ISO 5211-F25,F30	1605
34"	510	28	4	24	ø1104.9	1 7/8" (8UN)	ø50.8	610	650	150	110	270	60	20	ø80	22x14	ISO 5211-F25,F30	1656
36"	510	32	4	28	ø1168.4	2" (8UN)	ø54.1	660	680	150	110	270	80	24	ø85	25x14	ISO 5211-F25,F30	1747
40"	550	32	4	28	ø1155.7	1 5/8" (8UN)	ø44.5	730	765	160	125	280	70	24	ø90	25x14	ISO 5211-F25,F30	2452
42"	570	32	4	28	ø1206.5	1 5/8" (8UN)	ø44.5	769	770	160	150	280	70	24	ø95	25x14	ISO 5211-F30,F35	2652
48"	630	32	4	28	ø1371.6	1 7/8" (8UN)	ø50.8	900	895	160	155	300	100	27	ø110	28x16	ISO 5211-F30,F35	4099

NOTES

- DESIGN STD. : API 609
- Mating FLANGE : ASME B16.34 SERIES A, CLASS300

					DESCRIPTION	DWG. No.	863- 26- 48- 30FB- 011	SCALE	N/A	
					H/P BUTTERFLY VALVE	TEST PRESSURE	HYDROSTATIC	SHELL	SEAT	
					26" TO 48" 863 FLANGED			AIR	kgf/cm ²	kgf/cm ²
					CLASS 300 BARE STEM				kgf/cm ²	kgf/cm ²
Rev. No.	DATE	DESCRIPTION	DRN.	APP.						
0	23.06.20	FOR REFERENCE	DJ,LEE	JH,YU						