

No.	Part	Soft Seated		Metal Seated		Fire Safe	
		Carbon steel	Stainless steel	Carbon steel	Stainless steel	Carbon steel	Stainless steel
01	BODY	WCB	CF8M	WCB	CF8M	WCB	CF8M
02	DISC	CF8M		CF8M+HCR		CF8M	
03	STEM	17-4PH		17-4PH		17-4PH	
04	SEAT	RTFE		SS316		RTFE+SS316	
05	SEAT RETAINER	1020	SS316	1020	SS316	1020	SS316
06	PACKING	PTFE(V-PACKING)		GRAPHITE		GRAPHITE	
07	BUSH(BEARING)	SS304+Teflon	SS316+Teflon	SS304+HCR	SS316+HCR	SS304+HCR	SS316+HCR
08	GLAND BRIDGE	SS304		SS304		SS304	
09	GLAND RING	SS304+HCR		SS304+HCR		SS304+HCR	

871 - Dimension / ASME B16.5 Class600 / Lug type [ unit : mm ]

Size	L	n	BCD	T	H1	H2	H3	FxF	E	C	KEY BASE	FT	TOP MOUNT	Weight (kg)
3"	54	8	ø168.1	3/4" UNC	125	160	35	14x14	30	ø19	6x6	13	ISO 5211-F10	14
4"	64	8	ø215.9	7/8" UNC	145	210	35	17X17	42	ø20	6x6	13	ISO 5211-F10	16
6"	78	12	ø292.1	1" UNC	205	245	35	27X27	57	ø30	10x8	14	ISO 5211-F12	68.5

**NOTES**

- DESIGN STD. : API 609
- Mating FLANGE : ASME B16.5 CLASS600

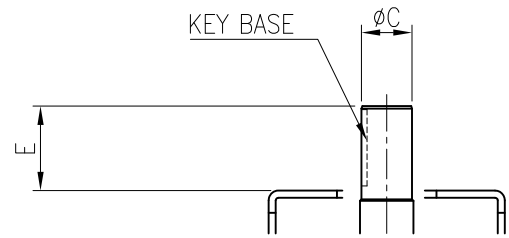
Rev. No.	DATE	DESCRIPTION	DRN.	APP.
0	23.06.15	FOR REFERENCE	DJ,LEE	JH,YU

**DESCRIPTION**  
**H/P BUTTERFLY VALVE**  
**3" TO 6" 871 LUG**  
**CLASS 600 BARE STEM**

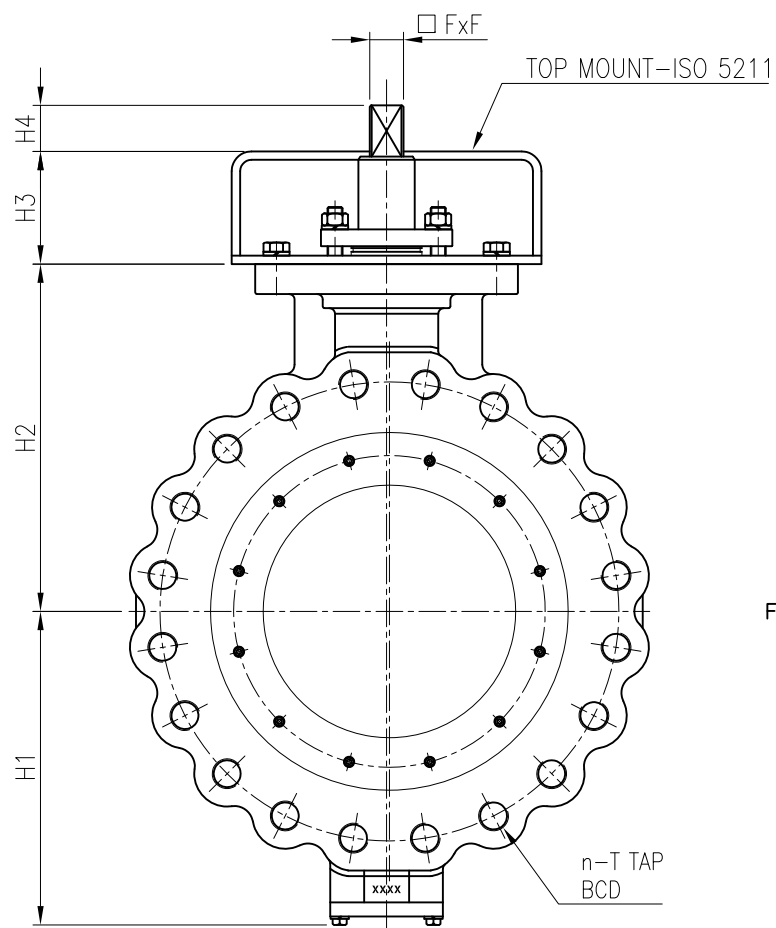
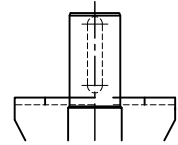
DWG. No.	871- 3- 6- 60LB- 010	SCALE	N/A
TEST PRESSURE		SHELL	SEAT
	HYDROSTATIC	kgf/cm <sup>2</sup>	kgf/cm <sup>2</sup>
	AIR	kgf/cm <sup>2</sup>	kgf/cm <sup>2</sup>



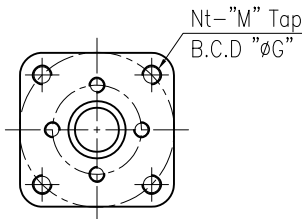
No.	Part	Soft Seated		Metal Seated		Fire Safe	
		Carbon steel	Stainless steel	Carbon steel	Stainless steel	Carbon steel	Stainless steel
01	BODY	WCB	CF8M	WCB	CF8M	WCB	CF8M
02	DISC	CF8M		CF8M+HCR		CF8M	
03	STEM	17-4PH		17-4PH		17-4PH	
04	SEAT	TFM1600		SS316		TFM1600+SS316	
05	SEAT RETAINER	1020	SS316	1020	SS316	1020	SS316
06	PACKING	PTFE(V-PACKING)		GRAPHITE		GRAPHITE	
07	BUSH(BEARING)	SS304+Teflon	SS316+Teflon	SS304+HCR	SS316+HCR	SS304+HCR	SS316+HCR
08	GLAND BRIDGE	SS304		SS304		SS304	
09	GLAND RING	SS304+HCR		SS304+HCR		SS304+HCR	
10	BRACKET	Carbon steel		Carbon steel		Carbon steel	



\*\* SHAFT option



\*\* BARE MOUNT DIMENSION



FLOW →

871 - Dimension / ASME B16.5 Class600 / Lug type

[ unit : mm ]

Size	L	n	BCD	T	H1	H2	H3	H4	Nt	G	M	FxF	E	C	KEY BASE	TOP MOUNT	Weight (kg)
8"	102	12	ø349.2	1 1/8" 8UN	250	270	100	48	4	165	20	27x27	75	ø40	12x8	ISO 5211-F14,F16	94
10"	117	16	ø431.8	1 1/4" 8UN	290	290	110	48	4	165	20	36x36	75	ø45	14x9	ISO 5211-F14,F16	148
12"	140	20	ø489.0	1 1/4" 8UN	330	335	110		8	205	16		100	ø55	16x10	ISO 5211-F16,F20	227
14"	155	20	ø527.0	1 3/8" 8UN	380	380	100		8	205	16		100	ø65	20x12	ISO 5211-F16,F20	305
16"	178	20	ø603.2	1 1/2" 8UN	415	445	110		8	254	16		105	ø75	20x12	ISO 5211-F16,F20	372
18"	200	20	ø654.0	1 5/8" 8UN	460	470	110		8	254	16		105	ø85	25x14	ISO 5211-F20,F25	470
20"	216	24	ø723.9	1 5/8" 8UN	500	500	120		8	298	20		130	ø95	28x16	ISO 5211-F25,F30	615
24"	232	24	ø838.2	1 7/8" 8UN	595	550	120		8	298	20		130	ø105	28x16	ISO 5211-F25,F30	875

**NOTES**

- DESIGN STD. : API 609 B
- Mating FLANGE : ASME B16.5 CLASS600

					DESCRIPTION	DWG. No.	871- 8- 24- 60LB- 011	SCALE	N/A
					H/P BUTTERFLY VALVE	TEST PRESSURE	HYDROSTATIC	SHELL	SEAT
					8" TO 24" 871 LUG			kgf/cm <sup>2</sup>	kgf/cm <sup>2</sup>
					CLASS 600 BARE STEM			AIR	kgf/cm <sup>2</sup>
Rev. No.	DATE	DESCRIPTION	DRN.	APP.					
0	23.06.15	FOR REFERENCE	DJ,LEE	JH,YU					