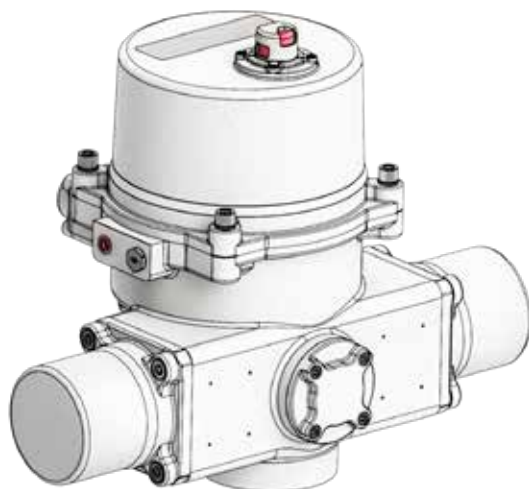


SE E032 XH | Open/Close

Overview, Specifications, Dimensional Data, Materials of Construction, Wiring Diagrams



SE E032 XH Series Open/Close/Jog/Modulating



Overview

The SE E032 XH Series are spring return, quarter-turn electric industrial service actuators delivering up to 3185 in-lbs torque in voltages ranging from 24VAC/VDC up through 230VAC, and available in 2 position (Open/Close), 230VAC, and are available in 2 position (Open/Close) control schemes. (2) Form C auxiliary switches and an internal anti-condensate heater are standard. Key features include:

- 24v models operate on AC or DC power supplies
- 120vac & 230vac models operate on 50 or 60 Hz supplies
- 3D Raised Position indicator
- ISO5211 compliant mounting with double-square drive socket
- Spring CW (standard) fail-safe positioning
- IP68 standard

Options

- Handwheel manual override
- Spring CCW fail-safe positioning
- Local Control Stations

Specifications

		SETE032 XH
Supply	Torque Output (in-lb / Nm)	3185 in-lb / 360 Nm
24V	Starting Current (A) DC/60Hz/50Hz	85 / 85 / 85
	Running Current (A) DC/60Hz/50Hz	8.6 / 10.3 / 10.4
	Speed (90°) sec @ rated load - DC/60Hz/50Hz	24 / 24 / 23
	Speed (90°) sec @ spring return	8
	Motor Power	130 Watts
	Duty Cycle	100% (EN 60034) Class A (ISO 22153)
120V	Starting Current (A) 60Hz/50Hz	5.2 / 5.4
	Running Current (A) 60Hz/50Hz	2.4 / 2.2
	Speed (90°) sec @ rated load - 60Hz/50Hz	22 / 27
	Speed (90°) sec @ spring return	24
	Motor Power	130 Watts
	Duty Cycle	100% (EN 60034) Class A (ISO 22153)
230V	Starting Current (A) 60Hz/50Hz	2.4 / 2.5
	Running Current (A) 60Hz/50Hz	1.1 / 1
	Speed (90°) sec @ rated load - 60Hz/50Hz	22 / 27
	Speed (90°) sec @ spring return	23
	Motor Power	130 Watts
	Duty Cycle	100% (EN 60034) Class A (ISO 22153)
ALL	Environmental Rating	NEMA 4/4X & IP68
	Electrical Entry	3/4" EMT x 2
	Control	Open/Close
	Auxiliary Switch - End of Travel	(2) Form C Volt-Free, Rated 10A @ 250vac, 5A @ 30VDC
	Ambient Operating Range	-40°F ~149°F (-40°C~65°C)
	Humidity Range	0-95% RH
	Altitude Limit	9850 ft / 3000 m
Weight (kg / lbs)	108 kg / 238#	

* Models weighing over 32 kg / 70lbs must be shipped by Truck

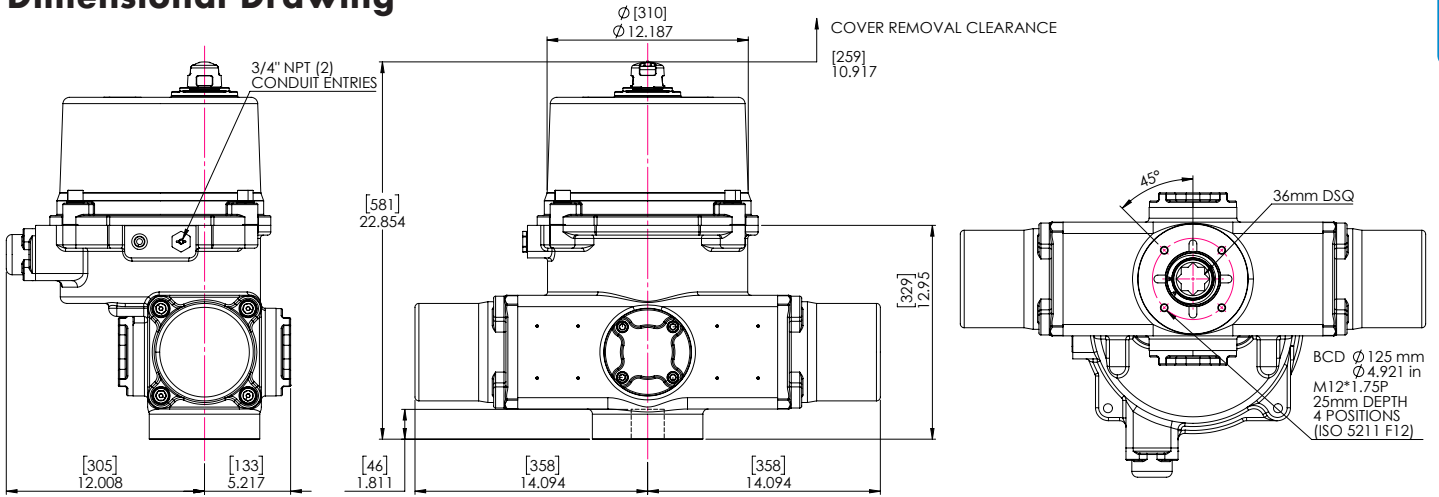
SE E032 XH | Open/Close

Overview, Specifications, Dimensional Data, Materials of Construction, Wiring Diagrams



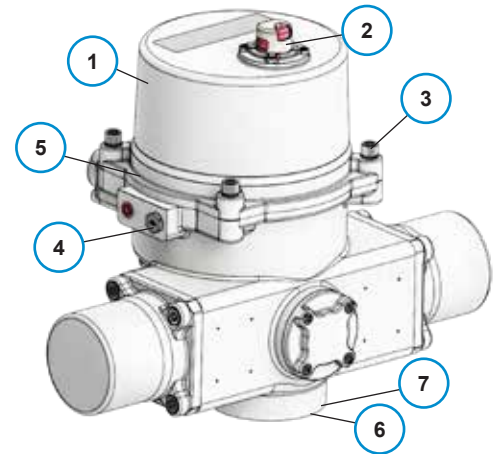
Website

Dimensional Drawing



Materials of Construction

#	DESCRIPTION	MATERIALS
1	Actuator	ADC3 Aluminum Alloy
2	Indicator	Transparent ABS
3	Cover Screw (x4)	SUS304
4	2nd EMT Port Seal	Polyamide
5	Cover Seal	NBR O-Ring
6	ISO Mount Profiles	ADC3 Aluminum Alloy
7	Output Socket	FDC60 Graphite Iron



Wiring Diagrams

Typical wiring diagram shown.

Max-Air reserves the right to change specifications through a continuous-improvement program.

Contact Max-Air for product specific wiring diagrams prior to engineering or installation efforts.

